



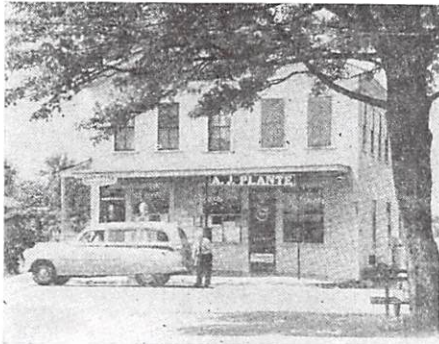
A Little Spot of Heaven

The Laurel Lake Ledger

Laurel Lake Association

26th Annual Newsletter Spring 2013

60 AND GOING STRONG



"Your Friendly Store"

ARTHUR J. PLANTE

GROCERIES

ICE CREAM

CANDY

TOBACCO

GAS & OIL

Tel. 24-3

Fitzwilliam Depot, N. H.

2013 marks the 60th Anniversary of the incorporation of the Laurel Lake Association in 1953. Originally called the Laurel Lake Associates, the first committee meeting was held on May 25, 1950 at Fleur de Lis camp. Three lake property owners, Gilbert L. Chadwick, Wayne R. Cobleigh, and H. Clayton Kendall recognized the need for an organization to address the safety concerns which confronted the lake and its residents. By July 1, 1950, the first membership meeting of seventy two people was held. The main concerns for the members were that the camps and cottages around the lake were not numbered for fire reporting purposes, dangerous areas of the lake were not marked, and that Lake Road had no speed limit signs. By the summer of 1953, all of these issues had been rectified. The Association continued to thrive and, at that time, Arthur Swenor was the Chairman of the Board and Eloise M. Brown was the Secretary/Treasurer of the group.

In hindsight, 1953 proved to be a watershed year for the Fitzwilliam business community. Willard M. Blodgett, the Town Clerk and Tax Collector for the town, published a guide of local businesses. Some of the highlighted businesses would continue to exist long after 1953. Those would include the Fitzwilliam Inn, Roy's Store, A.J. Plante (Your Friendly Store), Ruff Wood (the predecessor of Casey J's and now the Flip Side Grille), and the lumber companies, S.S. Stone and Sons, Tommila Brothers, and Damon's Mill. A few other businesses didn't survive as

long, which included the Fitzwilliam Chinchilla Ranch, Blodgett's Bowling Center, Hannant's Country Auctions, and Steeplechase Kennels. Also highlighted were a number of enterprises centered around Laurel Lake. At that time, the town's permanent population was 820 people. During the summer months the population of the town doubled. The tax rate was \$4.40 per \$100.00. Blodgett wrote a "Welcome to the Rural Town of Fitzwilliam in Southern New Hampshire." In the introduction, he noted that "Within its 26,000 acres of land, lakes, ponds and streams the elevation ranging from 884 feet to 1880 feet one may find something for everyone, whatever your pursuit, industry, commerce, agriculture, recreation or retirement."

LAUREL LAKE



S. E. WHITE

MODERN COTTAGES

1 to 4 Bed Rooms

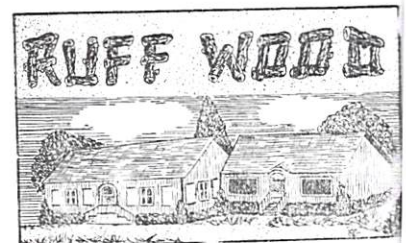
Gas — Water — Electricity

CAMP SITES

Laurel Lake Road

Fitzwilliam Depot, N. H.

Tel. 16-3



Enjoy Country Home Cooking and Rural Hospitality in a Rustic Setting of Hand-hewn Beams and Unfinished Timbers in-the Ruff.

LUNCHES * DINNERS * BANQUETS

BUFFET SUPPERS SUN. NITE

6:30 — 9:00

Booths — Counter — Dining Room Service

OPEN YEAR ROUND

Corner Routes 12 & 119

LORETTA LAWRENCE
Fitzwilliam Tel. 105-11



However, Laurel Lake was far different in 1953 then it is now. The Fleur de Lis Camp for girls was prominent at the south end of the lake. Most the camp's property was where the Laurel Lake Inn had been in the early part of the 20th Century. The South Pond Cabins for boys occupied a good portion of the west shoreline. On either side of this camp, a few cottages abutted the property. At the north end of the lake and along part of the east shoreline, the White family owned a good amount of acreage. After the end of World War II, the Whites' began doing business in the tourist trade. By 1953, they had a trailer park, summer cottages for weekly rentals and made available leased land for people to built permanent structures. From the White property line on Keene Avenue and along the Lake Road, many summer homes dotted the eastern shoreline. Stunning views of Laurel Lake could be seen from the point at Windswept, the Fitzwilliam Swim Club, the Perry-Price property and Spicer's Point. The Swimming Club had been organized by village residents and had moved to its current location in 1951. Aside from the two camps, Henry Whipple raised Native Turkeys on Howeville Road and Donn Brackett run the Barraldon Summer Theatre which featured "Stage Shows" every Saturday night in the summer. In 1953, it was evident that Laurel Lake was a very active summer community.

Submitted by Steve Olson

BARRALDON SUMMER THEATRE

AT LAUREL LAKE



1½ miles from Fitzwilliam Depot

— Stage Shows Every Saturday Night —

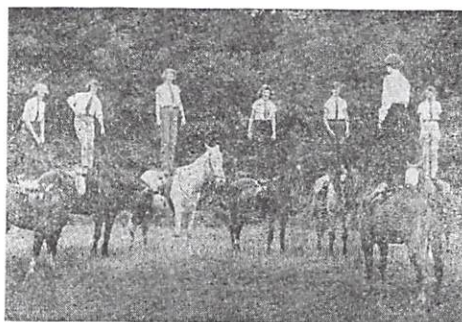
FUN FOR EVERYONE!

Skits — Surprises — Songs

"When spring has sprung
and summer has riz . . .
This is where the entertainment is"

DONN BRACKETT

OWNER and PRODUCER
Laurel Lake, Fitzwilliam, N. H.



Country Horse Back Riding



Native Turkeys

Broad Breast Bronze and White Holland

HENRY WHIPPLE
LAUREL LAKE

Fitzwilliam, N. H.

Tel. 34-2

LAUREL LAKE



S. E. WHITE
TRAILER PARK

SANDY BEACH

Swimming — Picnics

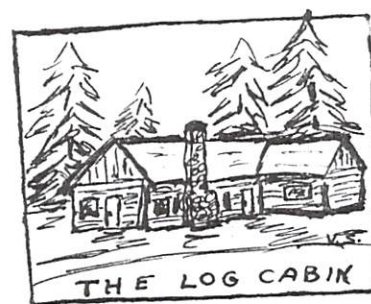
BOATS

Laurel Lake Road

Fitzwilliam Depot, N. H.

Tel. 16-3

LAUREL LAKE



THE A. J. SWENORS

COTTAGES — BOATS

VIOLET A. SWENOR
LANDSCAPES IN OILS

—WINTER—
1401 Mariposa St.
National City, Calif.

—SUMMER—
Laurel Lake Road
Fitzwilliam Depot, N. H.



Other Fitzwilliam 1953 Businesses:

FITZWILLIAM CHINCHILLA RANCH



N.C.B.A. — Registered Stock

The R. L. STONES

Route 119



SLED DOG RACING

One of the most colorful and unique of winter sports is the sled dog racing and is sponsored by the "New England Sled Dog Club" which was organized in 1924.

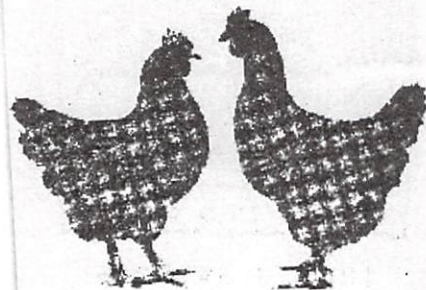
Fitzwilliam is one of the few towns in New England to hold these events and annually about 15 teams averaging 9 dogs and their owners attract hundreds of enthusiasts to witness the thrilling performance of these trained Siberian Huskies racing over 15 miles of fields and roads.

The dogs are just as anxious to race as the spectators are to see them, while a loud speaker system announces the highlights and the news reel make pictures for movies and television.

Fitzwilliam is the home of a Kennel which raises and trains Siberian Huskies and the team may be seen often in its training sprint and is a fascinating demonstration of the ability of these animals.

HOLMAN FARMS

Producers of Hatching Eggs
for Hubbard Farms



HOLSTEIN DAIRY HERD

Blueberries in season

HOWARD C. HOLMAN
Fitzwilliam Depot Tel. 18-11

POST OFFICES



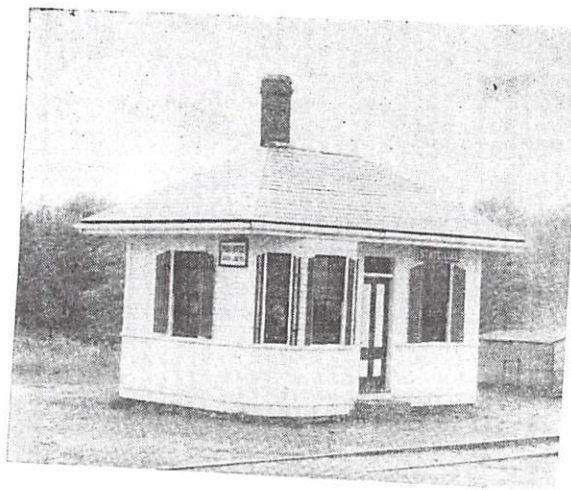
ROY'S STORE

ON THE VILLAGE GREEN

An Old Country Store
Built in 1859

Made Modern
— Self Service —
Orders and Delivery

CHOICE MEATS
FRESH FRUIT & VEGETABLES
FROZEN FOODS
Fitzwilliam Village, N. H. Tel. 7

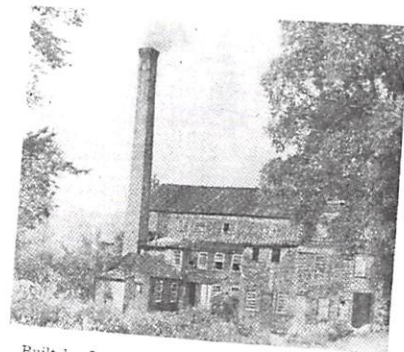


Fitzwilliam has three post offices, the first was established at the Village in 1805, the present Post Master is Mrs. Julia W. Blair.

The second post office was established at the Depot in 1866, the present Post Master is Walter E. Hill.

The third post office was established at State Line in 1890, the first Post Master was Charles Whitney, the following persons served as Post Master, Margaret Wilder, Chester Phillips, Samuel C. Williams, Nellie Rugg, Dorothy F. Chase and the present Post Master is Mrs. Dorothy E. Chase. The building is owned and maintained by Clarence M. Damon of State Line.

DAMON'S MILL



Built by John Damon in 1834, manufactured lumber, wood turnings and hay rakes until 1856 then Jonas Damon carried on the mill until 1906, when the children of Jonas, Walter S., Fred L., Elmer P., Lillian L., Isaac M. M., Clarence M., Justin J., and Harry C. Damon, continued the business. Since that time the mill has been managed mostly by Isaac M. M., Clarence M. and Harry C. Damon.
State Line, N. H. Tel. Winchendon 92-M4



2013 SUMMER EVENTS—LAUREL LAKE ASSOCIATION

JUNE

1st - 9:00 AM - The Board of Directors will meet at the house of Jacqi Woodruff on Keene Avenue.

1st - 6:00 PM - The 16th Laurel Lake Association Pot Luck Supper will be held at Camp Fleur de Lis dining hall. Enjoy an evening with friends and neighbors by starting off the summer season at Laurel Lake. Bring your own drinks and a dish to share. Coffee, silverware, and paper goods will be provided.

JULY

4th - 9:30 PM - Celebrate the Fourth of July with the traditional lighting of flares around Laurel Lake. Flares are available for purchase at The Meating Place. (Regular road flares may contain phosphorus and can be bad for the lake. The flares sold by the association are safe for use by the lake.)

13th - 10:30 AM - The Annual meeting and chicken barbeque celebrating our 60th anniversary will be held at White's Field, Keene Avenue. Speaker is Andrea Moreaux from New Hampshire Lakes Association, talking about our Lake Host Program & shoreline protection. Other events will be planned.

27th - 3:30 PM - Boat Parade. Boat parade theme is "60 Years at Laurel Lake."

AUGUST

3rd - 11:00 AM - The **23rd** Annual Canoe/Kayak Race at Sandy Beach. Registration starts at 9:30 AM. Kids race at 11:05 a.m., 1.5 mile Jr/Sr at 11:00, 5 miler at 12:20, 2.5 mile at 12:30 p.m.

31st - 1:00 PM - The Dresser-Friedman Regatta. Rain date is Sept. 1

SEPTEMBER

7th - 9:00 AM - The Board of Directors will meet at Camp Fleur de Lis.

8th - 10:30 AM - The Laurel Lake Association Pot Luck Brunch will be held at Camp Fleur de Lis to celebrate the finale of the 2013 Summer season.

ASSOCIATION 60th ANNIVERSARY PLANS

To celebrate the Laurel Lake Association's 60th anniversary we will be having a chicken barbeque on the day of the Annual Meeting, July 13. Annual meeting business and our speaker from NH Lakes Association will be in the morning. The barbeque and other events (to be announced) will follow. Look for posters around the lake with details. Remember to bring a chair to the annual meeting.



MESSAGE FROM THE PRESIDENT OF LAUREL LAKE ASSOCIATION

Being asked to write a short President's Note is an expected job. Having been asked to write a short note about conditions around the Lake in 1953 – that's 60 years ago, folks – is quite another. It firmly suggests that I am an "Old Timer"! Upon short reflection – I AM! I remember well 1953: I had just graduated from Deerfield Academy and on my way to a small Indian school in Hanover NH! – wonderful summer! There have been so many, before and after.

Laurel Lake itself, is one thing that has changed very little; still clear, clean and inviting. It is that way, in some part, to our organization's over-view care and concern. May it stay that way for our following generations! Population about the Lake has increased a bit. The West side of the Lake has populated with the addition of several new homes over the years; the East side is essentially the same, having been built-out by 1953 – and sometime before that! The East-side road, East Lake Road is a super highway today if one were to have napped from then to now. It was a one and a half lane blacktop path, a 2 mile series of speed bumps from the Depot to the south end of the Lake. The West side was not better and not even hard-top then. There were motor boats on the Lake, but not of the horsepower of today. The fastest was a 25 (perhaps slightly larger) Mercury craft owned by the Delahanty family, more sail boats and canoes, but few, if any, kayaks. Routinely the girls from Fleur de Lis paraded the lake in canoe formation and the 8 man shells from the boys' camp, South Pond Cabins, raced up and down the Lake. The sunsets are, fortunately the same – beautiful!

The Depot was just that, a depot. Trains ran regularly both directions, Keene one way and Boston the other. In the 40's and early 50's, going to the Depot to meet my father, who commuted to work in Keene, was an adventure. It meant putting a penny on the track to be flattened by the train wheels followed by an ice cream at Plante's Store. Arthur Plante was store keeper/owner and post master in residence. His presence was followed for years by his son in law, Joe Tardiff. It is, today, one of the things I most miss; driving by that site it is sad to see it closed.

I could go on, old folks like to ramble, you know. Some of the youngsters' eyes will roll at this piece, but for those who remember, it was a great time and a great place to have been. This Summer marks the 60th of the Laurel Lake Association and we all expect yet another wonderful season "up to the Lake"!

Cal Perry and Mary Ann

MEMBERSHIP REPORT

As of April 29th the membership numbers for the 2012 membership year are:

255 Adults

15 Children

270 Total members in 149 households

The final numbers for 2011 were 276 total members in 152 households. Currently 20 members have paid their 2013 dues.

As always, thanks for your continued support. **Perry Nadeau**

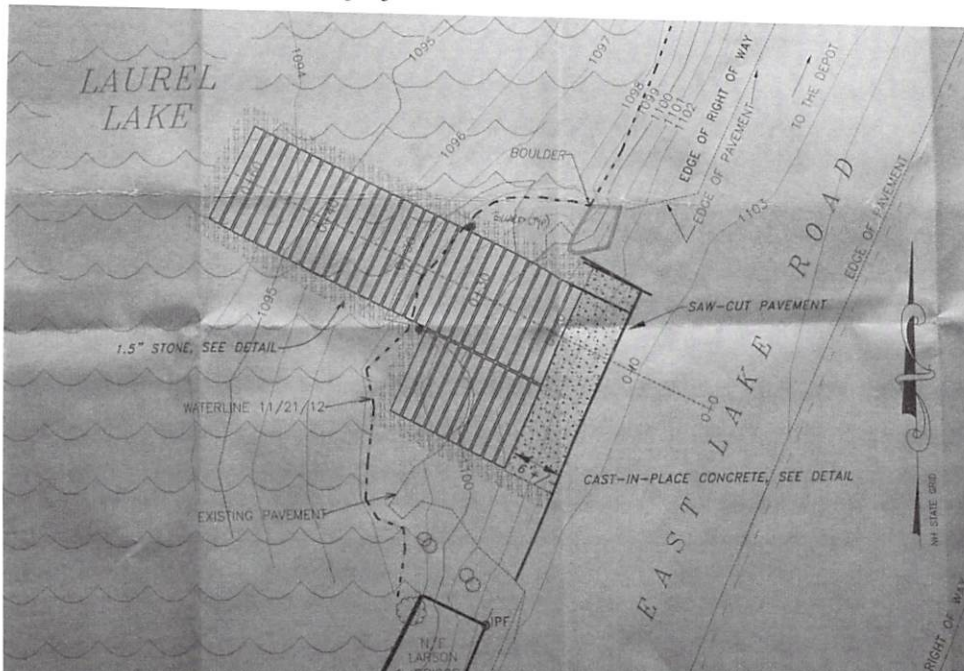


Fitzwilliam Town Meeting Approves New BOAT RAMP for Laurel Lake

On Tuesday, March 12th 2013 the town of Fitzwilliam approved the sum of \$ 31,000. to construct a new boat ramp on Laurel Lake. This follows the acquisition of the property by the town in 2012 from Anne Korjeff who represented the heirs of the Whipple estate.

In October of 2012 the Fitzwilliam Board of Selectmen established a Laurel Lake Property Advisory Committee to oversee the use of the property and advise the Selectmen on future needs. The members of this Committee are Terry Silverman, Barbara Green, Robert Handy and Jack Dumont.

The Committee working with Graz Engineering, designed a new boat ramp for the property to replace one which is in need of major repairs. The new ramp will be constructed with ten and 12 foot concrete boat ramp planks. The plans call for a width of 12 feet, except at the very top which would be approximately 18 feet wide tapering down to the 12 foot width. Paved concrete will form the transition from East Lake Road to the point where the cement boat planks begin. The southerly end of the boat ramp will consist of terraced granite blocks and pea stone with a dry hydrant. The northerly end will also have pea stone laid down. Gene Como from the town's highway department will take on the construction project.



After finalizing the plans at the Committee's April 23rd meeting Paul Grasewicz submitted them to the State of New Hampshire DES for approval on Friday, April 26, 2013. It is expected to take approximately seventy-five (75) days for approval and two to three weeks for the construction process. Construction work will begin once all approvals have been received.

Submitted by **Jack Dumont**

ICE OUT AT LAUREL LAKE

According to the official keeper of "ice out" records at Laurel Lake - Dave Streeter - ice out date for 2013 was April 14. This is almost a month later than last year's record breaking early date but more in line with the dates going back to 1963.

**BECOME A LAKE HOST - VOLUNTEERS WANTED**

Ten waterbodies in the Monadnock Region are now infested with exotic (non-native) aquatic plant species. The Ashuelot River, Contoocook River, Cheshire Pond, Contoocook Lake, Forest Lake, Monomonac Lake, Pearly Pond, Powder Mill Pond, and Otter Lake have Variable milfoil infestations. The Connecticut River is infested with three different species.

In 2002 the New Hampshire Lakes Association and NH Department of Environmental Services developed the Lake Host™ Program to educate and prevent boaters from spreading exotic aquatic plants to waterbodies in New Hampshire. Since then, the number of participating waterbodies, volunteers and number of “saves” (exotic plants discovered) has consistently increased. Trained Lake Hosts at public motorized boat ramps do the following:

- Educate visiting boaters about exotic plants by explaining the problems associated with exotic plants, distributing brochures, and answering questions.
- Conduct courtesy, voluntary boat, trailer, and recreational gear inspections on vessels entering and leaving public waters.
- Show boaters where to look for plant hitchhikers on boats, trailers, and recreational gear.
- Remove all plant material found.
- Take samples of suspicious plants, so they can be sent to the Department of Environmental Services for identification.

This year Laurel Lake will be participating in the Lake Host™ Program. Volunteers are needed for weekends and holidays from Memorial Day through Labor Day. Training will be provided. If you are interested in volunteering for a few hours, call Dick Dwinell at (603) 585-9225, or e-mail lamhoh4@juno.com. Visit www.nhlakes.org for more information about the Lake Host™ program.

LEDGER PUBLICATION

For the first time, we are asking people if they would like to opt out of receiving a paper copy of the Laurel Lake Ledger. The membership form now asks if you would like to receive an emailed PDF version of the Ledger instead of a paper copy delivered by US Postal mail. We are continuing to produce hard copy versions of the Ledger but feel some people might prefer the electronic version instead. The Ledger is also available on our web site: www.laurellakeassn.com. Check off your preference when you return your membership dues. If you don't check anything, you will continue to receive a hard copy by postal mail. Also, make sure the mailing address you put down is where you will be in the May timeframe when we mail the Ledger. Some folks use their winter address but may not be there in May.



2012 VOLUNTEER LAKE MONITORING REPORT

The Voluntary Lake Assessment Program (VLAP) was operating smoothly in 2012, in spite of budget cuts and staff reductions that were implemented in 2011. Laurel Lake's team of volunteers collected samples as usual in June, July (with the VLAP biologist), and August. Samples were analyzed at the DES laboratory in Concord. You can access all the results in the new 2012 Individual Lake Reports and Regional Reports on the VLAP website at http://des.nh.gov/organization/divisions/water/wmb/vlap/annual_reports/2012/index.htm.

VLAP lakes have been grouped into seven regions. You will find a wealth of interesting information in the Regional Reports about land use, population growth, exotic species, geography, etc. of each of the regions. Go to the Individual Lake Reports and click on "Monadnock Region" to find Laurel Lake test results. Following is a very brief summary of 2012 results, which were similar to the last sampling season.

Chlorophyll-a levels, that indicate concentration of algae, were relatively low throughout the summer. Historical trend analysis indicates a significantly decreasing (improving) chlorophyll level since monitoring began.

E. coli levels were elevated in the Keene Ave. tributary. All other stations were well below state standards for public beaches and surface waters.

Total Phosphorous levels in the upper water layer were low and have remained relatively stable since monitoring began. Total phosphorous is the limiting nutrient for growth of algae.

Transparency was well above the NH lake median and similar to 2011. However, historical trend analysis indicates a significantly decreasing (worsening) lake transparency since monitoring began.

pH was lower than desirable and potentially critical to aquatic life.

Recommended Actions: Although *E. coli* continues to be elevated in the Keene Avenue tributary samples, many site visits have not identified any sources of *E. coli* other than wild life and/or domestic animals. Periodic sampling will be done to detect changes. The improving chlorophyll trend is a good sign and we hope to see this continue.

Many thanks to last season's excellent monitoring team Phyllis Lurvey, Perry Nadeau, Roberta Nadeau, Kathy Olson and Barbara Schecter.

Submitted by **Barbara Green**

PEOPLE OF THE LAUREL LAKE ASSOCIATION

Beautiful Laurel Lake is still beautiful and clean thanks to the dedicated people who have put lots of love and labor into helping to keep it that way. The Laurel Lake Association founders - H. Clayton Kendall, Gilbert Chadwick and Wayne Cobleigh - were insightful in seeing the need to create a group to protect the lake. Their leadership was followed by the folks who formally incorporated the Association in 1953: Gilbert Chadwick, Art Swenor, Archie Lovell, Clifford Fales, Pauline Foster, John Teeter, and Elsie Brown. Since that time, a lot more people have devoted their time to continuing the goals of the Association. Unfortunately, the earliest records we have of our activities start in 1984 so I can't recognize people from before then but I want to say "Many thanks" to the people since then who have served on the Association's Board and committees. This is a rough chronology of them and I apologize to those whose names I have missed.

Thank You to:

Bill Hoag, Brenda Hoag, Harold Fisher, Gardner Dresser, Bill Woodruff, Louise Woodruff, Catherine Main, Pauline Foster, Clifford Fales, Gus Hoyland, Midge Deyo, Virginia Nevins, Dick Marchetti, Ed Hart, Art Rousseau, Jim Baab, Jim Townsend, Don Garland, Horace Daub, Rob Prunier, Karl Anderson, Marguerite Albertini, Warren Furey, Jack Dumont, Shirley Quinn, Laura Whitmore, Milt Posovsky, George Graf, Tracy Januskiewicz, Don Treat, Larry Friedman, Bruce Knight, Tom White, Pat Quinn, Don Austin, Cal Perry, Phyllis Chase Lurvey, Jim Baldwin, Anne Korjeff, Barbara Green, Liz Young, Charley Brackett, Arnie Anderson, Dana Mullett, Eve Samuels, David Brackett, Jim Deyo, Lou Milanesi, Sue Wood, Cal Linkenhoker, Perry Nadeau, Cheryl Mahoney, Dan Mahoney, Gretchen Prunier, Barbara Dumont, Craig Heatley, Joe Larson, Jay McNamara, Jack Aukstikalnis, Terry Silverman, Marge Aukstikalnis, Ray Gehling, Roberta Nadeau, Maureen Moore, Robert Woodruff, Mary Ann Perry, Steve Olson, Jason Pryor, Kim Pryor, Phil Walling, Debby Nance, Fred Krompegal, Jeannette Gardner, James Baldwin, Kathy Olson, Beth Samuels, Greg Gardner, Bill Townsend, Linda Daigle, Jacqi Woodruff, Lexy Heatley, Catherine Greeley, Brad Greeley, Jeff Prunier, Linda Anderson, Jon LeClaire, Barbara Brooks, Bill Chase, Bill Samuels, Tricia LeClaire, Barbara Schecter, Ned Greeley Ken DeBlieu.



FITZWILLIAM'S 250TH ANNIVERSARY CELEBRATION

Last year was Fitzwilliam's 250th anniversary and several days worth of events were held to celebrate. In addition to tours and lectures there was a kick-off celebration dance and pizza party, a pancake breakfast, colonial re-enactment camp, time capsule, Boston Post Road cane presentation, a parade, chicken barbeque, fireworks, ecumenical service, covered dish luncheon, games, handtub muster and antique fire truck show, a celebration of the library's 100th anniversary and a band concert. The Laurel Lake Association participated in several of these events including a float in the parade. Unfortunately, during a summer of little rain, the rain we got happened on the Saturday of many events, including the parade, and caused a long delay in the fireworks. However, the activities were a lot of fun. (I loved that the Tracie's Farm float handed out cucumbers and green peppers instead of tossing candy like other floats!) Here are some photos of the events thanks to Phyllis Lurvey. The town also has published a lovely photo memory book that is available at the library and town hall.



Steel Band - "Tropical Thunder" - performs July 3 at the LeClaires. (photos from Phyllis Lurvey)



Pot Luck Brunch, September, 2012 at Fleur de Lis. (photos from Perry Nadeau)





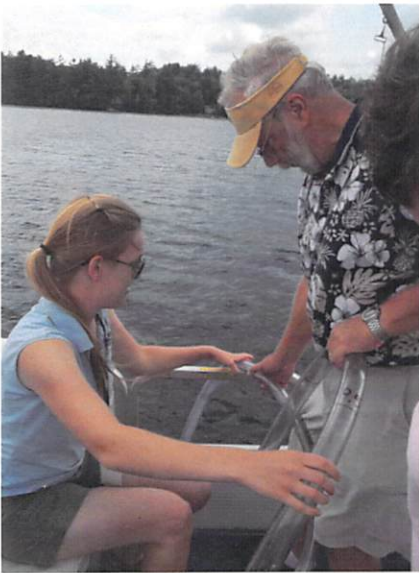
Dresser-Friedman Regatta, 2012. (photos from Beth Samuels)



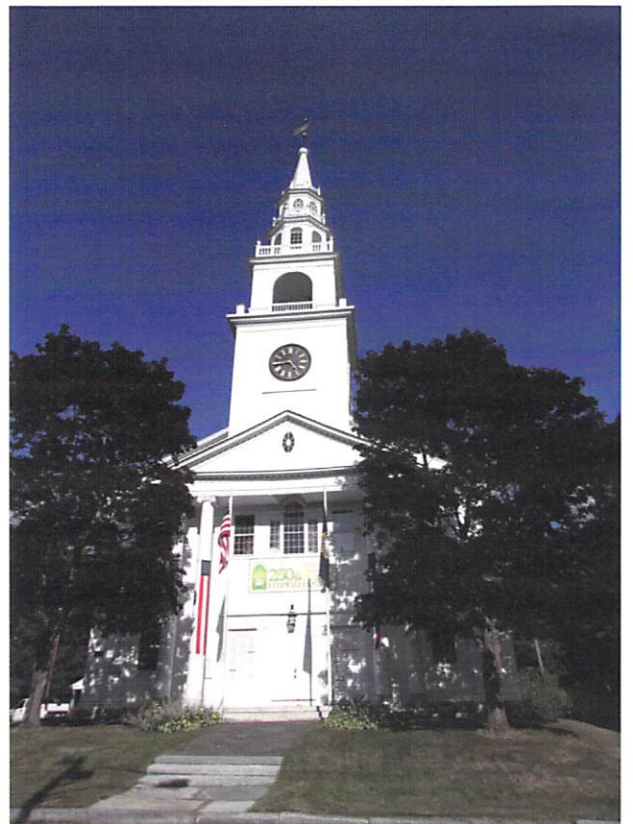
Intrepid Sailors left to right: Pat McNamara, Jay McNamara (the winner), Jeff Prunier, Commodore Rob Prunier, Bill Samuels, Tom White



Water Testing (photos from Phyllis Lurvey)



Around Town:





2012 WEED WATCH REPORT LAUREL LAKE, FITZWILLIAM, NH

As in past years, two weed surveys were done in 2012: one in July and one in August. Possibly in 2013 we might try adding a third survey in June to better cover the entire growing season and to be proactive in keeping track of weed growth in the lake. A decision will be made in the spring to determine weed watcher availability for a June survey.

The good news is that we are still in good shape with no exotic weeds that we could find. In general, the central portion of the west side of the lake had a smaller concentration of weeds than other sections of the lake. The sunken island had substantial amounts of pipewort and floating heart. The infestations of pond weed on the lake continue to expand in size and additional locations of pickerel weed are showing up. The less severe winter of 2011-2012 and the warm March 2012 weather gave an early start to all types of weed growth. Amy Smagula from the NH DES was very helpful in identifying some samples sent to her: small bladderwort and pondweed on the west side of the girl's camp pier; American waterwort on each side of Sandy Beach; and some tape-like burrweed. Also, Debby Nance sent some weed samples to Amy for identification from nearby Sportsman's Pond but they are all native and no exotic.

Thanks to our good supply of weed watchers: Barbara Green, Debby Nance, Tricia LeClaire, Roberta Nadeau, Phyllis Lurvey, Barbara Dumont, Steve Olson, Ken DeBlieu, Linda Anderson, Mary Ann Perry, and Catherine, Brad and Ned Greeley.

Submitted by Weed Watch Co-Chairs: **Beth Samuels and Bill Townsend**

In Memorium

Winthrop Brown II - Win, 78, of Fitzwilliam, passed away Jan. 2, 2013. Win spent his childhood summers at South Pond Cabins. He was a stockbroker and financial advisor in the Monadnock area for many years. He was very active in the Fitzwilliam community, serving on the Budget Committee and was President of the Fitzwilliam Swim Club.

Joyce Nevins Patterson - Joyce passed away Jan. 15, 2013 in Fountains Hills, AZ at the age of 60. Originally from Athol, Joyce spent her childhood summers at Laurel Lake. Although she and her husband Jim lived in different parts of the country, they always returned to Laurel Lake in the summer to visit family and friends.

Edmond Albertini - Edmond passed away in the summer of 2012 in Marlborough, MA. His late wife Marguerite was a long time member of the Board of the Laurel Lake Association and Edmond volunteered his services along with her. They provided many years of helping with memberships, selling flares, preparing and serving food at various events. After retiring to Florida, they spent their summers at Laurel Lake.



Laurel Lake Association

2012 - 2013 OFFICERS

Cal Perry - President

Perry Nadeau - Vice President

Liz Young/ Steve Olson - Secretary

Jeannette Gardner - Treasurer

BOARD OF DIRECTORS

Jack Dumont	2013	Barbara Brooks	2014
Lexy Heatley	2013	Jacqi Woodruff	2014
Jon LeClaire	2013	James Baldwin	2015
Terry Silverman	2013	Barbara Green	2015
Charley Brackett	2014	Kathy Olson	2015
Bill Chase	2014	Bill Samuels	2015
		George Graf	Honorary

COMMITTEE CHAIRPERSONS

Steve Olson	Editor Laurel Lake Ledger
Barbara Green	Water Testing Committee
Beth Samuels/Bill Townsend	Weed Survey Committee
Barbara Dumont	Nominating
Jack & Barbara Dumont	Annual Meeting/Family Picnic
Charley Brackett	Canoe/Kayak Race
Rob Prunier	Dresser-Friedman Sunfish Regatta
Jacqi Woodruff	LLA Logo Products - T & Sweatshirts & Hats
Perry Nadeau	Membership/Boat Rules
Terry Silverman	4th of July Celebration
Open	Swim Club Representative

Visit our Web Site at: www.LaurelLakeAssn.com



**Laurel Lake Association
Treasurer's Report year ending October 31, 2012**

	<u>Expenditures</u>	<u>Income</u>	<u>Difference</u>
T-shirts etc.	\$ 989.20	\$ 826.00	-\$163.20
Flares	463.98	725.00	261.02+
Canoe Race	1290.66	1044.00	- 246.66
Membership		2802.00	
Dues for organizations	430.00		
Donations		155.00	
Annual Mtg.	276.72		
Ledger	357.33		
Conference fee	55.00		
PO box fees	80.00		
250 th Birthday	415.59		
Regatta	51.00		
Water Testing	530.48		
Green products		8.00	
Supplies	110.26		
Checking Acct. interest		6.64	
Totals	\$5050.22	\$5566.64	+\$516.42

Checking Account beginning balance \$7495.02
 + Total Income 516.42
 Current balance \$8011.44

CD beginning balance	\$19892.84	Total Assets:
Present balance	20288.81	\$20288.81
CD interest for 2012	395.97	<u>+ 8011.44</u>
		\$28300.25 Total

**Respectfully Submitted,
Jeannette Gardner, Treasurer**

**2012 CANOE & KAYAK RACE RESULTS**

The 22nd annual canoe and kayak race was a great success, with a good number of participants - 65 and 39 boats. Canoes & kayaks were about evenly split. Charley Brackett's good weather luck held again—sunny and comfortable. The kids race was way up from last year: 18 children, half from Fleur de Lis and half from children of members. The 2.5 mile race had 32 participants and the 5 miler had 7 people. The newest class, 1.5 mile Junior/Senior race had 8 participants.

2012 Race Winners:**5 Mile Race**

OC-1 Racing—Steve Nyman & Andy Ouellet
Men's Canoe—Daniel Acaro & David Acaro
Women's Canoe—Valerie Hamlett & Dianna Dugas
Men's Kayak—Chris Burr

2.5 Mile Race

Men's Canoe—Fred Thompson & Eric Jones
Jr/Sr Canoe—Dan & Matt Koble
Women's Canoe—Katie Geldart & Cali Keith
Men's Kayak—Ted Dubinski
Tandem Kayak—Chad Hill & Ethan Hill

Children's Race—3/4 mile

Girl's Canoe—Emily Tingle & Maddie Nash
Girl's Kayak—Bridget Higgins
Boy's Kayak—Daniel Shrives
Mixed Canoe—Lilly & Ozzy Ropes & Jack Devlin

1.5 Mile Junior/Senior Race

Ron and Evan Hamlett

Tug 'O' War Winner:

Ron Hamlett & Ethan Heller

Runners Up:

Corey White & Cameron Keith

Youngest Participant:

Lucy Pierannunzi, 3 years old

Oldest Participant:

Steve Nyman, 74 years old

Submitted by **Kathy Olson**

PLEASE USE CAUTION DURING BOAT RACES

Please remember to use caution when boating during the canoe/kayak race and sail boat regatta. Your boat wake could endanger a paddler or sailor. These participants—including children—are focused on their racing, not trying to avoid large, unnecessary wakes that could capsize them.



GODS OF THE WIND AND THE LAUREL LAKE REGATTA

The Laurel Lake Regatta was held on Saturday, September 1st at one o'clock on a bright, balmy day, perfect for spectators and sailors alike. The field of sunfish has grown each year and this race held seven competitors, each sporting vibrant sails that danced across the lake. Likewise, the number of spectators observing and cheering on the racers from boats, on Sandy Beach, and along the shore has grown more numerous.

This year's participants were: Bill Chase, Jay McNamara, Pat McNamara, Matt Poulin, Jeff Prunier, Bill Samuels and last year's winner, Tom White. The race started with a blast from Commodore Rob Prunier's horn but the sunfish seemed to barely move from the starting point. With a trickle of wind from south to north, the boats crept past the first buoy, and with the wind picking up, the race was on! Dark clouds raced ahead of the boats scattering rain drops on the Samuels' dock while the sailors rounded Sunken Island. Fortunately those clouds and rain were swept away by the strong winds. The winds on Laurel Lake are tricky, and according to Jay McNamara as he spoke about his winning strategy, "You had to be in the right place at the right time."

In one of the fastest races in recent memory, Jay McNamara crossed the finish line in 35 minutes, beating Patrick McNamara's 2009 record of 37 minutes. Second was Tom White, followed in third by Bill Samuels. Pat McNamara and Jeff Prunier in tight order came in fourth and fifth respectively.

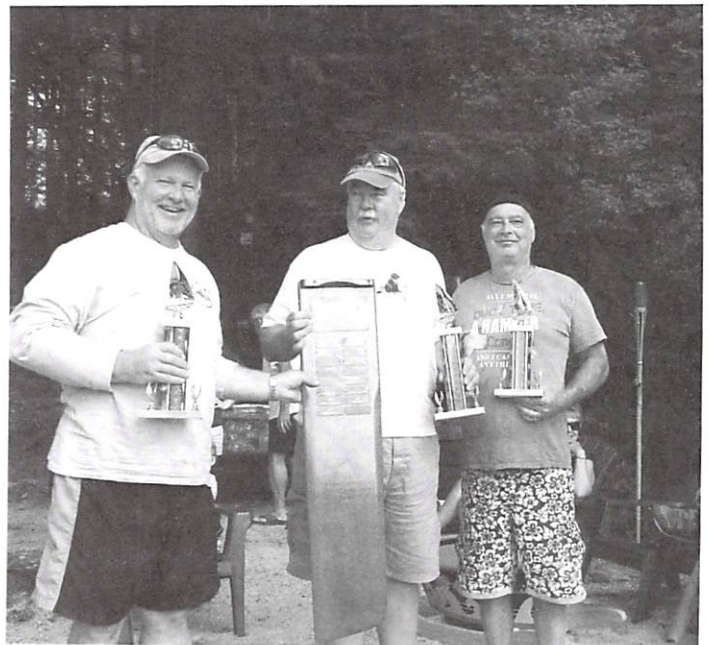
Refreshments and trophies at the home of the previous year's winner traditionally follow the race. Tom White and his wife Deb provided a scrumptious feast of wolf burgers and all the fixings. And no, the burgers were not made with wolf meat, but were made from a recipe from a prominent Wolfboro Inn. Before presenting the trophies Rob Prunier spoke about the 26 years that this regatta has been held. "This year," he said, "the gods of the winds made it a really special race." Barbara Dresser, whose husband Gardner, along with Larry Friedman, is honored in the centerboard trophy, spoke about the origin of Laurel Lake regattas, which were begun in the '40's by Maynard Kendall and Gardner Dresser who sailed snipes on the lake.

The 2013 regatta will be held on Saturday, August 31st at 1:00pm. We hope that even more sailors will line up their sunfishes near the Samuel's dock. You don't have to be an expert to participate and you'll be guaranteed - win or lose - to have a great time.

Submitted by **Beth Samuels**



Barbara Dresser



Tom White, Jay McNamara (the winner), Bill Samuels



ELLIOT INSTITUTE CONCERTS ON THE FITZWILLIAM COMMON

Bring a blanket or lawn chair for sitting. In case of rain, the concerts will take place at Town Hall. All events are free and open to the public.

Thursday, July 18, 7-8:30 p.m.	Walter Sayre Band (ballads, jazz & show tunes by 6 pc. band)
Thursday, July 25, 7-8:30 p.m.	Ragtime Jazz Cats (Dixieland & Ragtime jazz by 6 pc. Band)
Thursday, August 1, 7-8:30 p.m.	Winchester Community Band (standard band repertoire by 20 pc. Band)
Thursday, August 8, 7-8:30 p.m.	Brattleboro American Legion Band (32 pc. Band, marches, band repertoire)
Thursday, August 15, 7-8:00 p.m.	Toe Jam Puppet Band (interactive concert/show with storytelling)
Thursday, August 22, 7-8:30 p.m.	Fuzzy Logic (harmony laced originals with 2 guitars, bass 7 percussion)

SUPPORT OUR LOCAL MERCHANTS!

Activities of the Laurel Lake Association have been supported over the years by donations of goods and services from many of our local merchants and families. The annual canoe/kayak race has a popular raffle with many of the prizes donated from local businesses. We want to say 'thank you' to Camp Fleur de Lis who generously provide their dining room to us for the Pot Luck events and fall board meeting and to Laurel Lake Campground for use of their field and tent for the annual meeting. Say thanks to these merchants and organization for their support by giving them your business.

Birds & Things	Bottom's Up
Bullocks Farm Stand (#4 Road)	Camp Fleur de Lis
The Pottery Works	Holman's Landscaping
The Meating Place	Ed's Crossroads Pizza
Laurel Lake Campground	Flip Side Grill



2013 Laurel Lake Association Membership Form

Each Household of paid-up members will be
mailed a copy of the **Laurel Lake Ledger**

Membership Dues are \$10.00 for Adult Memberships and \$5.00 for children under 18

Members

Last Name	First Name	Membership Type	Amount
		A=Adult C=Child under 13	A/\$10.00 C/\$5.00
		A C	
		A C	
		A C	
		A C	
		A C	
If you wish, you may also include an additional donation to help support the association		Donation Amount	
		Total	

Permanent Address

Street _____

City _____ State _____ Zip _____

Telephone Number _____ E-Mail Address _____

Summer Address

☐ Same as above

Street _____

City _____ State _____ Zip _____

Telephone Number _____

Ledger Delivery Preference

Select how you'd like to receive your **Laurel Lake Ledger**

- ☐ I would like to continue receiving the Ledger via US Mail delivery
- ☐ I would like to receive an electronic copy of the Ledger via Email at the Email address below.

Email Address _____

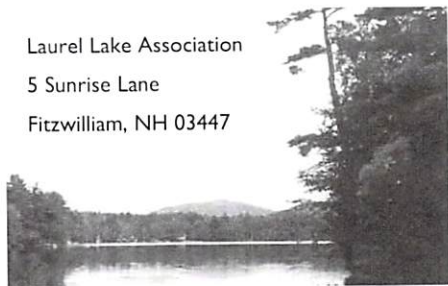
All Applications and checks should be mailed to:

Laurel Lake Association
Perry Nadeau
5 Sunrise Lane
Fitzwilliam, NH 03447

Thank you for your contribution

Visit us on the world wide web at <http://www.LaurelLakeAssn.com>

Laurel Lake Association
5 Sunrise Lane
Fitzwilliam, NH 03447



The White Household
334 Cumberland Rd
Deland, FL 32724

3272432475 0008

