



A Little Spot of Heaven

# The Laurel Lake Ledger

## Laurel Lake Association

### 35th Annual Newsletter Spring 2022

#### BITS AND PIECES ABOUT LAUREL LAKE'S DAMS AND MILLS

It was not long after the last Nipmucks left the area in the 1750s that Fitzwilliam was settled. And two of the things those settlers needed were a way to grind grain and a way to cut timber.

Since Fitzwilliam has no significant rivers or waterfalls it had a challenge to organize its water to create the power to drive mills to do that work. According to town records the first mill in Fitzwilliam was voted by the proprietors before the town was incorporated. In 1765 they granted to a Mr. Mellen property to build a grist mill. It was in use by 1767. By 1793, the date of the earliest tax records, three mills were listed and there were likely more than that. South Pond (as it was then called) mills came along more than a generation later.

The first mill on the Lake (South Pond then) was put in place in 1834 by Nelson & Joel Howe. (Members of the Howe family that had several other mills in Fitzwilliam over the years.) Presumably that was the one at the top of the mill pond at the south end of the Lake in the 1877 Map. It is about 500 feet south of Dam A (see my map) on the Lake, down a well-defined, clearly dug and lined sluiceway which lead to the Mill at Dam D. There is still ample stone structure there, mostly rough stone, only a little cut granite, to demarcate the location (behind the Fleur de Lis Farm House).

I've not been able to find any information on when the dams on the Lake were built (A, B & C). Their construction resulted in the height of the Lake increasing as much as 3.5 feet. That is the height of Dam A with all the boards in it and of Dam C.



Lore has it (Richard Whipple from his grandfather), that the springs in the Lake were sufficiently strong to bring the water back near the top of the dams after a day's production depleted all the dammed-up water. And the mill could run the next day.

The earthen dams at B & C wouldn't have taken long to begin to seep into the bog below them and from there into the stream that went to the outflow stream below Dam D. And from there down to what was then Meadow Pond, now Sportsman Pond. (I could find no name for this stream but it surely should have one!) That meant water coming from the Lake under Dams B & C was wasted from the perspective of the Mill at Dam D. In any case Dam E was created, forming the mill pond still present, below Dam D and the outlet from Dam C. Both mill dams were complete before 1858 as they show clearly on the county map of that date.

Dam E was a much more substantial dam, elegant in its cut granite stone still clearly visible. It was 4-5 courses high reaching 10' or so above the current ground level, impounding a good deal of water. This was presumably the mill that Mr. Whipple's grandfather was speaking of. Feeding the bigger dam and mill, recorded in some histories as employing 100 people at its prime making tubs, pails and other small wood products, took a lot of water.

The mills changed hands in 1868 when Seth Holman purchased them. He worked the mill(s?) until 1886 when they (he had Benjamin Heywood as partner by then) moved the operation down almost a thousand feet to just above Meadow Pond where a new mill was constructed. The

remains of that mill are easy to discern just to the SE of Fish Rock Road most of the way to Sportsman's Pond. It is intriguing to speculate on what motivated that difficult and expensive move. It was in operation until 1906/7 run by Hiram Derby who bought it in 1892.



The first three dams, of course, remain in place; D & E are wide open. Because of sand dumped at the Fitzwilliam swimming spot next to it, very little water flows out of Dam A except early in the spring. Dams B and C continue to seep as can be expected from simple, earthen dams almost 200 years old. That seepage can be readily seen as it runs under the Howeville Road at the dip just beyond the Girls' Camp Office and Dining Hall. (Watch out for the poison ivy!)

The Lake we know and love today is the gift of those hardworking entrepreneurs who set out to make pails and tubs.

Note: Visits to the mills on Camp Fleur de Lis property should only be made with permission and in the off season.

Sources: History of Fitzwilliam, Norton, 1887

Power of Water, Cheshire Hist Soc, 2012

From Here There Once Were Mills, Adams, 1976, Town  
Historical Committee, 1985

Cheshire County Maps of 1858 and 1877

Robert Corrette

Richard Whipple



Old dam remnants. Photo courtesy of Brad Greeley

**Submitted by Brad Greeley**

## MESSAGE FROM THE PRESIDENT

My Third "Message from the President". Wow, how time flies. Spring is here with the official "Ice Out date" of March 27. Each year at this time we begin to feel the attraction of the Lake calling us back. We are returning to the lake a bit later this year but hopefully in time to enjoy some black flies.

I want to take a moment to thank all the members who pitched in to insure the Laurel Lake Association continues to accomplish their mission. Despite plague, social distancing, cancellations, and all the hurdles we crossed the past two years the Laurel Lake Association continues to work to maintain the quality of the lake and provide family orientated programs. Our continued success is due to the dedication of all the members involved as well as a good measure of New England determination. We achieved many difficult tasks while maintaining the safety of the participants. Our water quality, invasive species watch programs, Lake Host Program, Fourth of July celebration, Annual Meeting, Canoe and Kayak race, and the Dresser Friedman Regatta all were a resounding success. Again it was the teamwork of the members who made them successful.

This year, my goal is to have our team put together a good old fashion chicken barbeque. As usual we will schedule it during the annual meeting since we had to skip the past two years. Dave Streeter has agreed to cook again this year. We will make sure to encourage the use of the secret barbeque sauce Dave uses which has been a part of the association barbeques for years.

As always our team will continue to provide as full a schedule for this summer's activities as the changing conditions permit.

My continued thanks to all who make the Laurel Lake Association a success.

**Tom White, President**



## 2022 SUMMER EVENTS—LAUREL LAKE ASSOCIATION

**Notice:** Due to the Covid-19 virus, all events are subject to cancellation. The Board will evaluate whether an event can be held based upon state and local guidelines. To check on the status of an event, please go to our web site: [LaurelLakeAssn.com](http://LaurelLakeAssn.com) or on Facebook.

### JUNE

4th—9:00 AM Board of Directors Meeting at Camp Fleur de Lis.

4th—5:00 PM Pot Luck **Supper** (first one in two years!!) to celebrate the new summer season and give us a chance to reconnect with each other. Bring a dish (appetizer, salad, main dish, dessert) to share. Coffee, plates & silverware will be provided. Location is the dining hall at Camp Fleur de Lis.

### JULY

3rd—9:00 PM Celebrate the Fourth of July with the traditional lighting of flares around Laurel Lake. Flares are available for purchase at Bottoms Up (Rt. 12) & Pottery Works (Rt. 119).

16th - 10:30 AM - The **Annual meeting** will be held at White's Field, Laurel Lake Campground, Keene Ave. Our featured speaker is Amy Smagula, Exotic Species Program Coordinator in NH's DES, who will talk about aquatic invasive species. Association business will also be addressed. And, to celebrate a return to normalcy, we will be having a **chicken barbeque** following the meeting. Bring a chair (none provided). Note: in case of terrible weather, the meeting will be moved to the train depot building in Fitzwilliam Depot, next to the fire station.

30th - 11:00 AM - The **31st Annual Canoe/Kayak Race**. Registration starts at 9:30 a.m. at White's Field. Kids race at 11:05 a.m., 1.5 mile Jr/Sr at 11:00, 7.5 miler at 12:20, 2 1/2 mile at 12:30 p.m.

### SEPTEMBER

3rd - 10:00 AM - The **34th Dresser-Friedman Regatta**. Rain date is September 4 at 10:00 a.m..

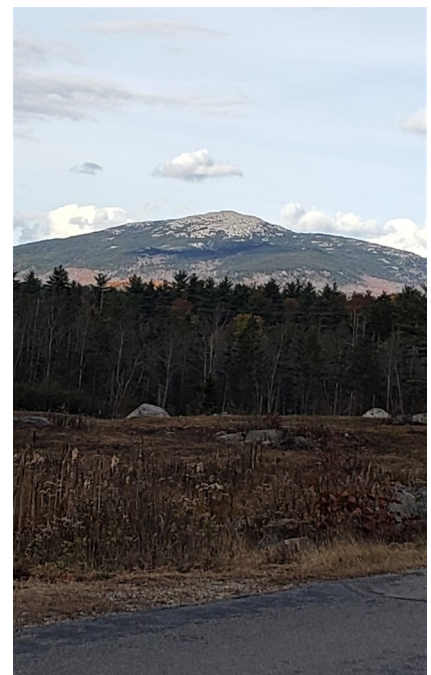
10th - 9:00 AM - The Board of Directors will meet at Camp Fleur de Lis.

10th - 5:00 PM - The Laurel Lake Association Pot Luck **Supper** will be held at Camp Fleur de Lis to celebrate the finale of the 2022 Summer season. Bring a dish to share. Coffee, plates & silverware will be provided.



Above: June 2021 Zoom Board of Directors meeting.

Right: our favorite mountain in the fall, from Jaffrey Road in Fitzwilliam







## Loon on Laurel

As I dip my paddle  
into the pristine waves

I notice a disturbance,  
breaking the pattern of  
splashing shore and  
shimmering sun.

A single loon  
bobbing in front of me  
without a single  
worry or whim.

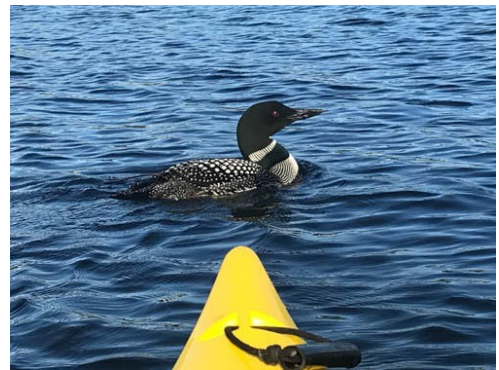
She seems unfazed  
with her glowing eyes  
and gothic coat  
that never seems to dampen.

They never let you  
get this close,  
with motorboats and jet skis  
whizzing by

disturbing the hidden  
beauty. I dare to  
move my arm, careful  
not to scare her off.

Just before I close  
the shutter, the gothic diva  
swims in front of my  
blinding vessel, posing,

As if she knew what I was  
trying to capture.



Nick, 18, is the grandson of Linda and Arnie Anderson, on East Lake Rd. He took these pictures with his cell phone while kayaking on the lake in August, 2021. He wrote the poem as a Christmas gift to his grandparents—a wonderful present. Thank you for sharing it with the rest of us. [Ed.]

Nicklas A. Anderson , December, 2021





## 2021 CANOE/KAYAK/SUP RACE

After a year's hiatus, due to Covid, the **30th** annual canoe/kayak & stand-up paddleboard race took place at its new location at White's Field. There were 36 boats and 46 total racers. The youngest participant was Margaret Michelson, age 3 and race MVP was Tom White. Unfortunately, due to continuing risks with Covid, the girls from Camp Fleur de Lis were not able to participate and the famous Canoe Tug 'O' War wasn't held but we hope 2022 will be different. This marks **Charley Brackett's 30th year** of running this wonderful event, which takes a LOT of logistics and help. Thank you, Charley!!

### Race Results—Category, Winner & Time:

#### 3/4 Mile Children's Race:

Girl's Kayak: Audrey Marshall (19:05)  
 Boy's Kayak: Mikey Cintron (11:30)  
 Junior Solo Canoe: Theo Kenyon (11:52)  
 Girl's SUP: Lila Pelkey (16:35)  
 Boy's SUP: Mason Pelkey (22:35)



#### 2.5 Mile Race:

Women's Kayak: Morgan McKenney (36:21)  
 Men's Kayak: David Maclean (32:33)  
 Tandem Kayak: Mike King & Bruce Hill (32:55)  
 Family Jr/Sr Canoe: Sean Donohue & Liam Donohue (27:58)  
 Men's Canoe: Fred Thompson & Steve Bleau (31:41)  
 Solo Canoe: Jim Mundell (34:22)

#### 5 Mile Race:

Men's Standup Paddleboard: Ken Cox (1:08:21)  
 Women's Standup Paddleboard: Jennifer LaFleur (1:11:38)

#### 7.5 Mile Race:

Men's Kayak: Dave Whitley (1:05:26)  
 Women's Kayak: JoAnn Hanowski (1:05:35)  
 Tandem Kayak: Bob Balla & Pam Browning Balla (1:10:12)  
 Jr/Sr Racing Canoe: Ted Kenyon & Theo Kenyon (1:10:02)  
 Mixed Racing Canoe: Del Cummings & Vicki Cummings (1:07:20)  
 Solo Racing Canoe: Michael Melnikov (1:11:45)  
 C-4 Racing Canoe: Di Dugas, Sandy Harris, Ed Euvard, Val Hamlet (1:09:20)





### IN MEMORIAM

**Rita Nirenberg**, 89, passed away in August, 2021 in New Jersey, after recently moving there from her home of 30 years at Laurel Lake. She and her late husband Morris started summering at the lake in 1973, moving there full time in 1992. Rita had degrees in psychology and taught elementary school for many years. She also was an entrepreneur, running a craft business, along with her husband's engineering & manufacturing businesses. In her retirement she founded the Fitzwilliam Library book club and was a docent for the town's historical museum. She is survived by her daughter and son and numerous grand and great grandchildren.

**Kevin Williams**, 71 of Fitzwilliam, passed away in September, 2021 after a long illness. Kevin was born in Gardner, MA but summered at Laurel Lake as a child and moved there in 1974. He served four years in the Air Force and was a talented handyman and avid golfer. He leaves behind his two sons, Ryan and Kyle, a granddaughter and siblings and their families.

**Lorraine White** passed away in January 2022 in Fitzwilliam at the age of 78. Lorraine was born in Keene, NH and travelled all around the world, due to her husband Dave's career in the US Air Force, but lived at Laurel Lake for many years and wintered in Port Charlotte, FL. She was an avid reader and former trustee of the Fitzwilliam Town Library, along with many other volunteering activities including Girl Scouts, community thrift store and church. She is survived by her husband of 57 years, Dave, her 3 children—Dave Jr., Jennifer and Daniel and 5 grandchildren.

### LAUREL LAKE LOGO PRODUCTS & ONLINE STORE

As we continue to move forward into the new normal in regards to Covid, this also affects how products are made, ordered, and delivered. When it comes to Laurel Lake Logo Products we have all the bases covered for you. There is a supply of pre-printed shirts, sweatshirts, hats, mugs and much more and these will be available for sale at the annual meeting July 16, at the canoe/kayak race on July 30 or by appointment.

In addition to the limited supply of pre-printed items we have pivoted to an online store through a local screen printing and design shop located on Winchester St. in Keene NH. The company is Bulldog; their website is <https://bulldog-design.com/>. Along with their website there is also a special online store setup specifically for the Laurel Lake Association so you can purchase Laurel Lake Logo Products. The web address for the online store is <https://laurellake.itemorder.com/>. How this works is the store will be open May 15 until June 15<sup>th</sup>; at that time Bulldog will close the store and put into production all the orders that were made through the 15<sup>th</sup> with the products being available 2-3 weeks after the online store is closed (just before the annual meeting). In addition to normal Laurel Lake Logo products there will also be canoe/kayak shirts. There are many ways to pick-up your gear and they include curbside, shipping to you (extra charges may apply). I will also be willing to pick up for anyone and we could do curbside pick-up at my camp at 14 South Pond Rd. (off of White's Grove Rd. on the east side of the lake). Anyone that needs assistance ordering, please contact Bulldog at 603-352-7217. If there are product selections you are looking for, please share those thoughts with me and I will see what I can coordinate with Bulldog.

The online ordering was very successful last year with two separate online store offerings throughout the year: one in the spring/summer and one in the fall just in time for the holidays which we will also offer in 2022 (dates to be communicated later in 2022—check the Laurel Lake Association website).

**Joe Pelkey**

[Jpelk20@yahoo.com](mailto:Jpelk20@yahoo.com)

603-762-2247



## ABENAKI CANOES FROM LAUREL LAKE



Canoeing on Laurel Lake is a long tradition, well pre-dating Charley Brackett running our annual canoe & kayak race. The photo here shows some comedians in the 1930's in their canoe on the lake in the winter. But, hundreds of years ago, canoes were the only way to transit rivers and lakes. The Keene Sentinel newspaper recently (April 17, 2022) published an article about two canoes that had been found at the bottom of Laurel Lake in the 1960's. Some of you above a certain age might remember hearing about it. The canoes have been on display at Franklin Pierce University for over 50 years but not much was known about them until a senior, Michaela Topham, applied for and received a grant from the University to carbon date the canoes.

Long before European settlers landed in this area, it was settled by the Abenaki Native Americans. The canoes the Abenaki built were so well made they were copied by the European settlers so it was difficult to tell who made them. But, Ms. Topham's carbon dating results show that these canoes were likely from between 1516 & 1674, which would indicate they were made by Abenaki, as the earliest European settlements in this area began in the 1730's.

The canoes had been fully submerged in the lake when they were found, a common practice for preserving wood. [Hundreds of trees were submerged in Turkey Pond in Concord, NH after the hurricane of 1938, as the sawmills couldn't handle all the trees that had been blown over. Millions of board feet were cut from those trees.] Many thanks to Michaela Topham, her professor Robert Goodby and the Keene Sentinel for this fascinating find & story.

**Kathy Olson**



Above: Sara Steiner, NH DES, taking water sample from Keene Ave. tributary, June, 2021.



Left: Gail Connelly valiantly but unsuccessfully attempting to save water testing paperwork that got blown overboard during June 2021 testing.

Right: Rachel Shrives, Barbara Green & Gail Connelly water testing August, 2021. Gail was able to stay mostly dry this time!



## WATER TESTING REPORT

Sara Steiner, NH DES water testing biologist, has modified the state's testing results reports, making them easier to read and containing a good summary, which Barbara Green used to have to prepare. As a result, we are just publishing the state's report on the following 2 pages. Many thanks to Barbara Green for coordinating, for decades, our equipment and testing dates and providing us with technical expertise. And thanks to testing volunteers Gail Connelly, Rachel Shrives, Phyllis Lurvey, Kathy Olson and Pat Deyo.





## VOLUNTEER LAKE ASSESSMENT PROGRAM INDIVIDUAL LAKE REPORTS

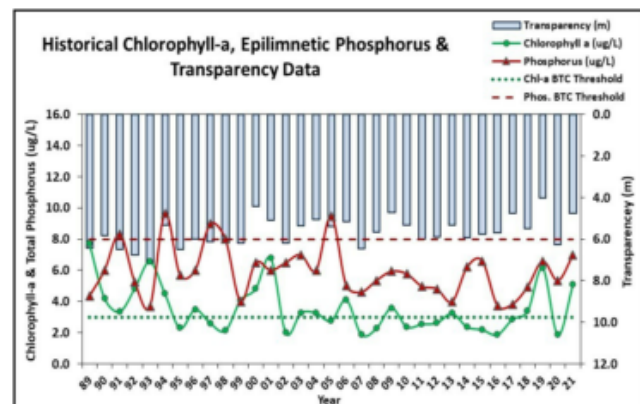
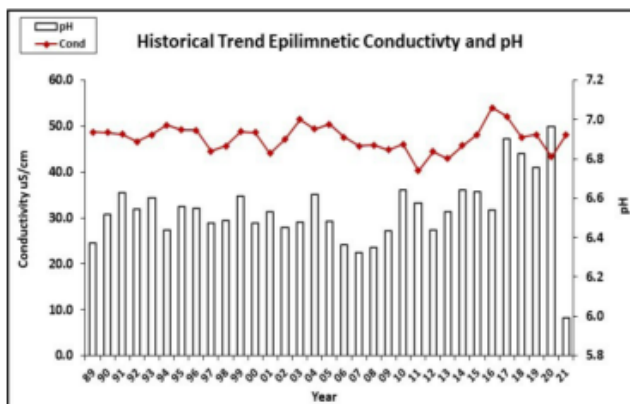
### LAUREL LAKE, FITZWILLIAM

### 2021 DATA SUMMARY

**RECOMMENDED ACTIONS:** Great job sampling in 2021! In contrast to drought conditions in 2020, record rainfall amounts in summer 2021 and associated stormwater runoff and flushing of wetland systems rich in dissolved organic matter resulted in higher nutrient (phosphorus) levels, algal growth (chlorophyll) and darker water color which resulted in decreased (worsened) water clarity (transparency). This highlights the importance of managing stormwater runoff within the watershed. Great job on submitting an application to develop a watershed management plan! Continue working towards development and implementation of a plan to help protect the lake from future degradation. Lake pH levels have improved in recent years and indicate recovery of the lake from historical impacts of acid precipitation, however the record rainfall amounts in 2021 resulted in more acidic lake water. Consider sampling in May to assess nutrient loading in spring which could influence algal growth in June. Keep up the great work!

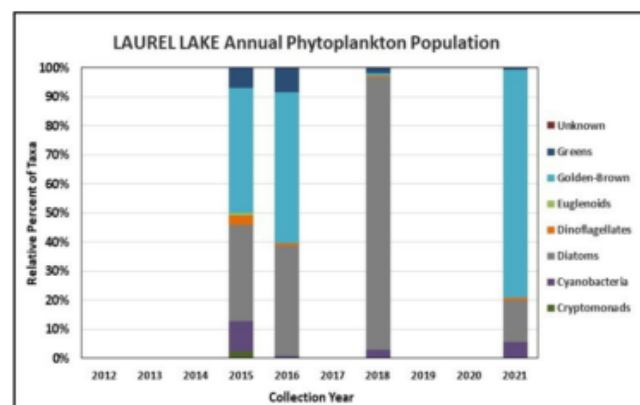
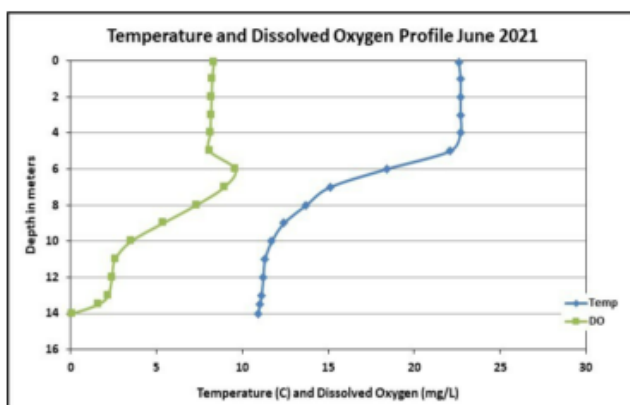
#### HISTORICAL WATER QUALITY TREND ANALYSIS

Parameter	Trend	Parameter	Trend
Conductivity	Stable	Chlorophyll-a	Improving
pH (epilimnion)	Stable	Transparency	Worsening
		Phosphorus (epilimnion)	Stable



#### DISSOLVED OXYGEN AND PHYTOPLANKTON

(Note: Information may not be collected annually)





LM-077



## VOLUNTEER LAKE ASSESSMENT PROGRAM INDIVIDUAL LAKE REPORTS LAUREL LAKE, FITZWILLIAM 2021 DATA SUMMARY

### OBSERVATIONS (Refer to Table 1 and Historical Deep Spot Data Graphics)

- **CHLOROPHYLL-A:** Chlorophyll level was elevated in June, decreased to a low level in July, and then increased to a slightly elevated level in August. Average chlorophyll level increased sharply from 2020 and was greater than the state median and the threshold for oligotrophic lakes. Historical trend analysis indicates significantly decreasing (improving) chlorophyll levels since monitoring began.
- **CONDUCTIVITY/CHLORIDE:** Epilimnetic (upper water layer), Metalimnetic (middle water layer), Hypolimnetic (lower water layer), and Keene Ave. Trib. conductivity levels remained within a low range and were approximately equal to the state median. Epilimnetic and Keene Ave. Trib. chloride levels were also low and slightly greater than the state median. Historical trend analysis indicates stable epilimnetic conductivity levels since monitoring began.
- **COLOR:** Apparent color measured in the epilimnion indicates the water was clear, with little to no tea or brown coloring in June, remained stable in July, and then darkened to moderately tea colored conditions in August following significant rainfall amounts prior to sampling.
- **E. COLI:** Keene Ave. Trib. E. coli levels were higher following storm events in July and August but levels remained less than the state standard for surface waters. Swim Club E. coli levels were very low on each sampling event.
- **TOTAL PHOSPHORUS:** Epilimnetic phosphorus levels fluctuated within a low range. Average epilimnetic phosphorus level increased from 2020 but remained less than the state median and the threshold for oligotrophic lakes. Historical trend analysis indicates relatively stable epilimnetic phosphorus levels since monitoring began. Metalimnetic phosphorus level was slightly elevated in July. Hypolimnetic phosphorus level was slightly elevated in June and August. Keene Ave. Trib. phosphorus level was elevated in August following significant rainfall amounts, however field data note low flows and lab data note highly colored water.
- **TRANSPARENCY:** Transparency measured with (VS) and without (NVS) the viewscope was high (good) in June, decreased (worsened) in July likely due to wave conditions, and then increased (improved) slightly in August. Average NVS transparency decreased (worsened) from 2020 but remained higher (better) than the state median. Historical trend analysis indicates significantly decreasing (worsening) NVS transparency since monitoring began. VS transparency was higher than NVS transparency and likely a better measure of actual conditions.
- **TURBIDITY:** Epilimnetic, Metalimnetic, Hypolimnetic, and Keene Ave. Trib. turbidity levels fluctuated within a low range.
- **pH:** Epilimnetic and Hypolimnetic pH levels were slightly acidic and less than desirable range 6.5-8.0 units. Historical trend analysis indicates stable epilimnetic pH levels since monitoring began. Metalimnetic pH level fluctuated around the low end of the desirable range in June and July and decreased in August likely due to significant rainfall amounts prior to sampling. Keene Ave. Trib. pH level was acidic and potentially critical to aquatic life.

Station Name	Table 1. 2021 Average Water Quality Data for LAUREL LAKE - FITZWILLIAM										
	Alk. (mg/L)	Chlor-a (ug/L)	Chloride (mg/L)	Color (pcu)	Cond. (us/cm)	E. coli (mpn/100mL)	Total P (ug/L)	Trans. (m)		Turb. (ntu)	pH
								NVS	VS		
Epilimnion	4.0	5.06	10	37	48.1		7	4.75	5.72	0.40	5.99
Metalimnion					48.6		9			0.41	6.32
Hypolimnion					51.0		13			0.58	5.84
Keene Ave. Trib. Before Lake			10		50.4	84	45			0.39	5.05
North Beach						6					
Swim Club						2					

#### NH Median Values

Median values generated from historic lake monitoring data.

**Alkalinity:** 4.5 mg/L **Chlorophyll-a:** 4.39 ug/L  
**Conductivity:** 42.3 uS/cm **Chloride:** 5 mg/L  
**Total Phosphorus:** 11 ug/L **Transparency:** 3.3 m  
**pH:** 6.6

#### NH Water Quality Standards

Numeric criteria for specific parameters. Water quality violation if thresholds exceeded.

**Chloride:** > 230 mg/L (chronic) **Turbidity:** > 10 NTU above natural  
**E. coli:** > 88 cts/100 mL (beach)  
**E. coli:** > 406 cts/100 mL (surface waters)  
**pH:** between 6.5-8.0 (unless naturally occurring)





## MEMBERSHIP REPORT

For the 2021 membership year, there were 172 members (160 adults, 12 children) in 80 households. This represents one of the lowest totals in the last three decades. It was reported that there were 157 members in 1989, however, membership levels increased in subsequent years to an average of 279 members in 144 households from 2003 through 2019.

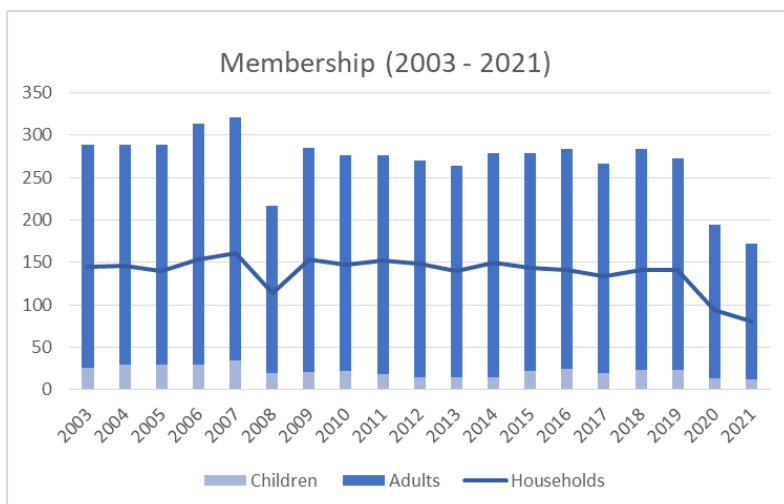
This year's Ledger is being sent to any households that were paid for 2020 or 2021. Please encourage your neighbors to join (or re-join) the Laurel Lake Association, and don't forget to renew your own membership! As a member of the Laurel Lake Association your contribution is important, helping to keep Laurel Lake crystal clear and enabling several social events throughout the Summer. Many events are returning this year and the more members, the merrier!

As discussed at the annual meeting in July 2021 and at the September 2021 Board meeting, the dues for adults have increased to \$15 after holding steady since 2008. This amount is still a great value compared to other lake associations and enables us to keep pace with rising costs. A child (under 18) membership remains at \$5.

Memberships can be renewed by using the membership form on page 19 or by going to our website (<https://www.laurellakeassn.com>) and using the online payment option from the membership page.

Thank you for your support!

**Bill Chase**







### Annual Meeting 2021!

I said I would make the pictures from the annual meeting the centerfold of the Ledger and here it is. My apologies for people I missed or incorrectly cropped.

It was so good to be back together and see everyone again. It was also a good meeting with a wonderful presentation by Pat Deyo on the natural habitat of Laurel Lake. He brought along great show & tell items, like salamanders, a frog, newts and fish. We all learned a lot and were well entertained. Thanks Pat!

K.O.



## SAFE BOATING ON LAUREL LAKE

Boating safety is the responsibility of all residents and guests who operate any type of vessel on Laurel Lake. It is a basic courtesy that we extend to all members of our community during the summer season. Because of the smaller size of our lake, following NH and local boating laws and regulations ensures a safe lake environment and basic water enjoyment for us all. Below are a few key boating rules to remember this season. A complete list of NH and Laurel Lake boating regulations and resources can be found at the Laurel Lake Association webpage <https://www.laurellakeassn.com/boating-recreation>.

- All motorized vessels of any size must be registered, in addition to sailboats and sailboards 12 feet or longer.
- Minimum age for operation of a boat with power in excess of 25 horsepower is 16 years unless accompanied by a responsible adult.
- No person may operate a boat or water ski while under the influence of alcohol or drugs.
- All non-power boats have the right of way over power boats.
- The maximum speed of operation for any vessel on Laurel Lake is 40 mph.
- Boats operating above headway speed (6 mph) must travel in a counter clockwise direction around Laurel Lake. This is especially true for boats pulling tubers, skiers, and wake boarders.
- No vessels should operate above headway speed between sunset and 8:00 a.m.
- Skicraft (aka "jet ski") are not allowed on Laurel Lake per NH RSA 270:74. Note: A *Skicraft* is defined as less than 13' in length as manufactured, capable of exceeding 20 mph, and has the capacity to carry no more than the operator and one other person. A *Personal Watercraft* (PWC) *may* have the capacity to carry more than the operator and one passenger; any PWC with a rated capacity of 3 or more passengers is permitted.
- Navigational lights (bow & stern) are required by any vessel when operating between sunset and sunrise, or during daylight when visibility is poor.
- Boats and trailers must be cleaned of all vegetation before entering or leaving the lake.

Submitted by Chip Yensan



## 2021 AQUATIC INVASIVE SPECIES SURVEY REPORT

A loyal and dedicated group of volunteers inspect Laurel Lake and its shore line three times each summer. They are on the lookout for exotic vegetation, zebra clams, milfoil and numerous other invasive species that have the potential to severely endanger our Lake. Volunteers are trained to recognize different exotic species and to submit photographs of “questionable” species to the state for analysis.

The committee meets at the beginning of June to discuss concerns and focus for the three summer months. Laurel Lake is “divided” into 10 sections; each section is monitored by the same person or persons each summer. They become very familiar with the patterns of growth in their section, and keep records of the quality of growth in their section as well as seasonal changes. These reports are returned to me at the end of each month, and I transfer the information to a large map of the entire lake. Copies of these maps are sent to the Department of Environment for the State for their records from all the lakes in NH that have AIS volunteers.

In the summer of 2021 we discovered no invasive species in Laurel Lake. However, we do have patches of yellow iris on the banks of the lake, and these can become a potential danger. The Board of the Laurel Lake Association has decided to write letters to landowners around the lake and to ask them to remove all yellow iris from the banks of their home. The long, deep roots of the iris have the potential to become matted on the bottom of the lake and can reduce the oxygen supply that is necessary for life. If you have yellow iris on your property, you will receive a letter from the board requesting that the iris and its roots be removed.



Yellow Iris photo courtesy of Mass Audubon website.

We owe a debt of gratitude to the volunteers who work each summer to protect Laurel Lake. They are: Stuart Grey, Bill Townsend, Charley Brackett, Roberta Nadeau, Tricia LeClaire, Barbara Dumont, Phyllis Lurvey, Ken DeBlieu, Lily Pierannunzi, Gail Connelly, Pat Spicer, Brad Greeley, Bobby Williams, Cat Lathrop Strahan, and Nancy Fey-Yensan.

If you are interested in joining the AIS Committee and becoming a volunteer, please contact me at the following email: [evsamuels1@yahoo.com](mailto:evsamuels1@yahoo.com)

**Submitted by: Beth Samuels, Chair of the AIS Committee**

### Concerts on the Common

Concerts are from 7-8:30 pm on the common or, in inclement weather, in Town Hall or the Emerson School. Concerts are funded by the Elliot Institute Trust Fund, founded in 1927.

**July 14<sup>th</sup>:** “The Green Sisters”: Four multi-instrumentalist singers who perform folk, country, bluegrass, and Irish music. This group is a returning favorite.

**July 21<sup>st</sup>:** “Retro Stew”: A 4-piece energetic classic rock band with superb 4-part vocal harmonies. They perform classic 60’s tunes through current radio fare. Genres include rock ‘n roll, blues, country, pop, and superb original tunes.

**July 28<sup>th</sup>:** “The Mark’s Brothers”: A five piece danceable, rock-n-roll jam band.... classic rock at its finest. This group is a returning fan favorite.

**Aug 4<sup>th</sup>:** “Gaslight Tinkers”: a blend of global, danceable music of Afrobeat, Caribbean funk and Latin tunes meet northern fiddle music.

**Aug 11<sup>th</sup>:** Library program (TBD): co-sponsored by Friends of the Library and the Elliot Institute Trust Fund.

**Aug 18<sup>th</sup>:** “Martin & Kelly”: standout crossover country 4-piece band. Jilly (Martin) and Ryan’s (Kelly) songs bridge the boundary between traditional and new country. They have been featured on NH Chronicles (WMUR-TV); they have performed from Nashville through New England.



## TREASURER'S REPORT

After a year hiatus, the Laurel Lake Association held two successful lake events this past year: the 30th annual Canoe and Kayak race, and the Dresser / Friedman Sailboat Regatta.

Outside of our regular annual operational expenses, and the revenue and expenses associated with the canoe race and sailboat regatta, the only additional significant expense approved by the board this year was a \$3,000 donation for a CPR machine, payable to the Dan Baker Fund Memorial.

### 2021 Income (Deposits)

### 2021 Expenses (Checks Written)

Description	Amount
Merchandise Sales	\$2,356.16
Membership	\$1,429.68
Donations	\$520.00
Flare Income	\$435.00
Canoe Race Income (raffle + registration)	\$855.00
	<b>Total Income: \$5,595.84</b>

Expense Description	Amount
Dues / Lake Host Program	\$862.06
Water Testing	\$430.00
Ledger Printing	\$611.53
Canoe Race	\$1,662.05
Sailboat Regatta	\$126.00
Dan Baker Fund	\$3,000.00
Flairs	\$170.00
Merchandise	\$1,844.50
Barbeque	\$44.11
	<b>Total Expenses: \$8750.25</b>

Income (Deposits) less Expenses (Checks written) = Net decrease of \$3,154.41

Savings and Checking Account Balances (People's Bank) as of Apr 29, 2022

- Checking Account balance: \$8,881.90

Certificate of Deposit (Service Credit Union) as of Apr 29, 2022

- Total account balance: \$9,672.63

Savings Balance (Live Oak Bank) as of Apr 29, 2022

- Total account balance: \$15,124.51

**Total Association Assets as of April 29, 2022: \$33,679.04**

**Respectfully Submitted, Mike King**



**2021 - 2022 OFFICERS**

Tom White - President	Kathy Olson - Vice President
Liz Young - Secretary	Mike King - Treasurer
Beth Samuels - Secretary	Perry Nadeau - Past President

**BOARD OF DIRECTORS**

Barbara Green	2022	Jack Dumont	2023
Bill Townsend	2022	Joe Pelkey	2023
Patrick McNamara	2022	Terry Silverman	2023
Bill Samuels	2022	Charley Brackett	2024
Ned Greeley	2022	Bill Chase	2024
Gail Connelly	2023	Jeff Prunier	2024

**COMMITTEE CHAIRPERSONS**

Kathy Olson	Editor Laurel Lake Ledger
Barbara Green	Water Testing Committee
Beth Samuels	Aquatic Invasive Species Survey Committee
Barbara Dumont	Nominating Committee
Jack & Barbara Dumont	Annual Meeting/Family Picnic
Charley Brackett	Canoe/Kayak Race
Bruce Hill	Commodore Dresser-Friedman Regatta
Joe Pelkey	LLA Logo Products - T & Sweatshirts & Hats
Bill Chase	Membership
Chip Yensan	Lake Host Program
Terry Silverman	4th of July Celebration Flares
John Fitzwilliam	Swim Club Representative
Perry Nadeau	Concert on the Lake

**Visit our Web Site at: [www.LaurelLakeAssn.com](http://www.LaurelLakeAssn.com)**  
**AND NOW ON FACEBOOK - SEARCH FOR LAUREL LAKE ASSOCIATION**



**Editor's Introduction:** Last year, someone suggested the Ledger have an article about life at Laurel Lake during the winter. I thought that was a great idea but I'm a summer resident so couldn't contribute. However, I did bring it up with some year round folks and the result is a wonderful synergy of great stories from Nan Fey-Yensan and Chip Yensan and delightful photos from Gail Connelly.

## WINTER AT LAUREL LAKE

The summer season is what we most associate with “lake life” at our little spot of heaven. A gentle kayak trip on a quiet morning; tubing and water skiing during those frenetic afternoons; a refreshing swim on a hot day; hooking a lunker on an early evening cast; and relaxing with a sunset cruise or shoreline campfire at the end of a beautiful day. These are the things we wait three seasons for each year.

With that said, those of us who live on Laurel Lake year-round, or who are able to make the off-season drive to the lake, know first-hand that fall, winter, and spring offer wonderful lake activities and memories as well. Regardless of the season, we all know that the fish keep biting (you just have to wear a few more layers of clothing to catch them during the off seasons), you can have as much fun on top of the (frozen) water as you can in it, and the sights and sounds of nature never stop amazing us (they just change along with the changes in temperature).



Spring and fall seasons on Laurel Lake are truly special. There is nothing more wonderful than the rusting foliage in the fall and the almost fluorescent greening of the newly budding leaves in the spring. But the winters...winters are so unique and special on Laurel Lake. Even for the most “cold averse” of us, lake life of the frozen variety is a joy to behold. While winter lake life is unique for each of us who experience it, here are a few observations from one year-rounder's perspective.

The Ice: Liquid to Solid to Liquid – A favorite off-season exercise is to mark the annual “ice-in” and “ice-out” dates. This year the ice-in happened during the second week of January, considerably later than the 20/21 winter season, and the 2022 ice-out happened on or about March 27 – a year to the day of the 2021 ice departure. Beyond marking the ice-in and ice-out dates, it's the sights and sound of the encroaching and receding ice that grabs your attention. When the ice freezes it makes incredible other-worldly sounds. Shifting plates of freezing water clunking and banging so loudly it can wake you up at night, and weird noises that emulate a light saber battle from any Star Wars movie. As the ice retreats in spring,



plates break apart and float with the wind and currents – consuming buoys under them and then releasing these anchor bobbies once again as the ice moves on. Those departing sheets of ice create mini lakes and rivers within the larger lake as liquid and solid interact and become one.

The Ice: Walking on Water – Watercraft and paddleboards certainly give us an “on top of the water” experience during the warm weather months. But there is nothing quite the same as walking on top of our lake in the winter. Whether boots, snowshoes, or XC skis are on your feet, walking the lake when the ice is safe is a wintertime treat at Laurel Lake. Brightly colored modern nylon bobber shacks, tip-up flags waving in the wind, and half-buried post buoys dot the lake and provide destination points along the way.





And when the thick ice is pure and without snow, nature creates a Zamboni-grade surface as smooth as any man-made skating rink. On these rare occasions, it's time to bundle up, strap on the blades, and take a glide around as much of the lake as possible before the wind, or your sore feet, betray you.

**The Snow** – The whiteness of a fresh snowfall is a joy to behold anywhere in our beautiful state. And when our lake and its shoreline are draped in a fresh blanket of snow, it warms your heart even on the coldest of days. Cottage roofs become a vista of white peaks, never noticed trees jump out at you, and foot-prints reveal the travel paths of an amazing array of our wooded companions. Always magical.

**The Lights** – One of the more wonderful aspects of living lake-side in the winter are the holiday lights that begin to adorn dock landings, railings, trees and shrubbery around Thanksgiving. During a time when daylight hours are shortened, it is the array of lights that twinkle a welcoming “good-evening” between year-round neighbors on each side of the lake. During those times when the ice is clear of snow and the lake shines like a mirror in the moonlight, the beauty of our neighbors’ lights is also magnified many times over. This festival of lights carries well into February and March for most of us, keeping us connected and cheery as the ice noisily contemplates spring and its ultimate decline.

**The Otters** - How can creatures so slinky and weird looking be so adorable to watch? The otters love to find holes in the ice, pop up through these weak spots, and play around on top of the ice. During one of our more memorable winter 2022 otter sightings, we watched four heads pop up through a small buoy hole, haul themselves up onto the ice, and then

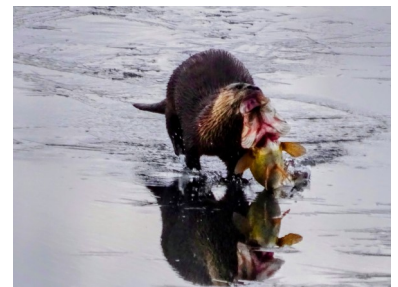


roll around and slide into each other like little kids playing on a snowy no-school day. And then, one by one they dive back in and come back out with fish in their mouths. One otter came up with what had to have been a 2lb. bass in its mouth - the poor fish flopping around on the ice as its captor began its feast. And when a second otter decided to join-in on the feast, the first raced clumsily toward shore on top of the ice with the second

chasing close behind – all the while with the fish still flopping between its mouth and the ice. Wish we would have had the camera on hand for that one, and, wish we had caught that fish ourselves through the ice!

Here's to our four seasons at Laurel Lake!

**Nan Fey-Yensan & Chip Yensan**



All photos on pages 15 & 16 are courtesy of Gail Connelly, except the pic of Gail golfing, which is courtesy of Greg Johnson.

Gail Connelly keeping up her form in anticipation of golfing season.





## 2021 DRESSER-FRIEDMAN REGATTA

This year there were four participants: Mike King, Bill Chase, Matt Poulan and Tom White.

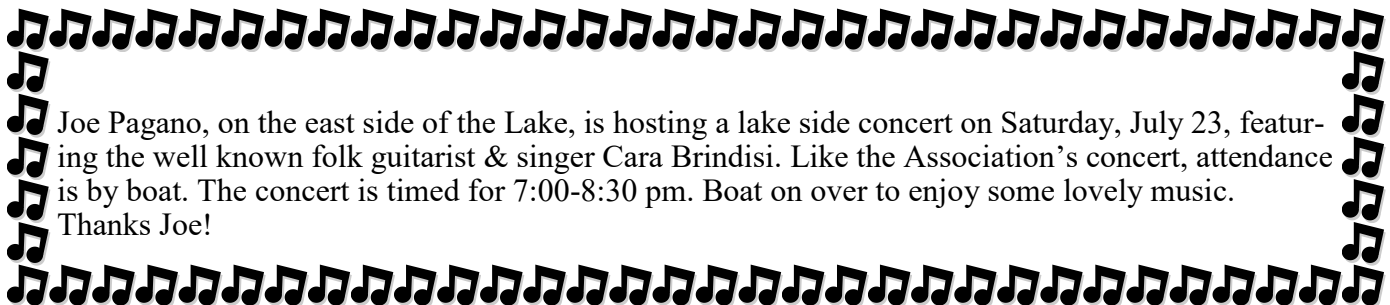
A triangular course was established with the start/finish line off Sunrise Rock. The commodore (Bruce Hill) started the field off with Matt taking an early lead through the start/finish line and Bill a close second, Tom and Mike bringing up the rear. At the first mark, Bill rounded first followed by Tom and Matt.

The second mark found Tom in the lead and he was able to hold on for the rest of the race.

Final times were Tom 34:02, Bill 35:34, Matt 35:58 and Mike 41:00. The awards gathering was at Matt Poulan's house.



Submitted by Tom White



Joe Pagano, on the east side of the Lake, is hosting a lake side concert on Saturday, July 23, featuring the well known folk guitarist & singer Cara Brindisi. Like the Association's concert, attendance is by boat. The concert is timed for 7:00-8:30 pm. Boat on over to enjoy some lovely music.

Thanks Joe!

Dear friends and neighbors,

As part of the process of updating the Town of **Fitzwilliam's Master Plan**, the Master Plan Steering Committee is seeking your opinion. Please take a few minutes to share your views by completing a confidential survey, which can be accessed online at <https://www.surveymonkey/r/FitzwilliamMasterPlanSurvey>.

Please complete this survey on or before June 15, 2022 (please disregard the date on the survey) so that your opinions can be included in the compiled results. We REALLY want the opinions of seasonal residents and so far less than 10% of responses are from seasonal folks; in 2007 it was 25%. As taxpayers, your inputs count!

Thank you in advance for your assistance and cooperation. Whether you are a year-round or seasonal resident, we truly value your opinion.

Sincerely, The Fitzwilliam Master Plan Steering Committee



## LAKE HOST PROGRAM: KEEPING OUT UNWANTED INVASIVES

The Laurel Lake Association (LLA) partners with NH Lakes to provide a lake hosting and inspection program at the Laurel Lake boat ramp during summer season months. The Lake Host Program is a courtesy boat inspection program administered by NH LAKES and supported by the Laurel Lake Association to prevent the introduction and spread of aquatic invasive species (AIS), plants, and animals from regional bodies of water. Laurel Lake's water quality is rated as among the best in NH, and we're very fortunate to have kept variable milfoil and other invasives like Asian clams from its waters. The Lake Host Program is considered a first line of defense in keeping aquatic invasive species from Laurel Lake.



Above (l-r): Phil Strahan, Chip Yensan, Tom White, Bob Handy, Nan Fey-Yensan, Ken DeBlieu.

Photos courtesy of Chip Yensan

**2021 Lake Host Report:** The 2021 Lake Host Program at Laurel Lake was very successful thanks in large part to the strong support of the Laurel Lake Association and the efforts of our paid Lake Host Inspector Robert (Bob) Handy and active Lake Host Volunteers Ken DeBlieu, Nan Fey-Yensan, Denis Guenette, Phil Strahan, and Tom White. Also, thanks to members of the Laurel Lake community who supported the program through donations and good old fashioned appreciation shared with our Lake Hosts. A summary of the 2021 Lake Host Program highlights and results is provided below.

**Funding** – An application for NH Lakes grant funding was submitted by, and awarded to, the LLA in spring 2021. This grant funding includes program administration and support from NH Lakes and is used to employ paid Lake Host Inspectors. Additionally, the LLA Board authorized supplemental funds to support paid Lake Host Inspector hours during the 2021 season.

**Lake Host Inspectors** – Recruiting for paid and volunteer Lake Host Inspectors was conducted in earnest. We were

very fortunate to secure the lake hosting efforts of Fitzwilliam resident Bob Handy who has been a friend to Laurel Lake for many years. Bob's hosting hours at the ramp, in combination with our five active volunteer hosts, provided solid Lake Host coverage. This was a significant step forward from our non-hosting summer of 2020 due to the pandemic. We need to set a summer 2022 goal of improving upon our very solid 2021 volunteer hosting efforts.

**Program Results** - The 2021 Lake Host Program at Laurel Lake accomplished the following key objectives:

- Fully engage in partnership with NH Lakes. (Secured annual grant funding.)
- Fully implement the Lake Host Program with volunteer and paid inspectors.
- Improve overall public visibility of Lake Host Program at Laurel Lake.
- Meet or exceed NH Lakes program base funding and volunteer match requirements. (Achieved 467% of base funding match.)
- Meet or exceed season target of 100 completed inspections. (230 inspections were conducted.)
- Provide first line of defense against invasive species. (A NH Lakes documented "save" on fanwort coming into Laurel Lake was made on a boat trailer in July. Lake Host volunteer and LLA President Tom White conducted this save. This was 1 of 15 "saves" documented statewide, and only 1 of 5 "saves" made on an uninfested lake during the 2021 summer season.)

### 2022 Lake Host Program - Building On Our Success:

We're off to a great start for the 2022 season! We have once again secured NH Lakes grant funding for our Lake Host Program. Also, Bob Handy has agreed to serve as our primary paid Lake Host Inspector. Despite these early achievements, we greatly need members of our Laurel Lake community to step up and offer volunteer Lake Host hours this summer. A commitment of just a few hours volunteering to greet folks at the ramp makes a huge difference for the Lake Host program. Free Lake Host t-shirts are given to those who commit to at least 5 total hosting hours during the season – that's equal to just 30 minutes a week over the course of our 10 week summer!

**Support the 2022 Lake Host Program and Volunteer Today!** For more information about the Lake Host Program at Laurel Lake and how to become a Lake Host Volunteer, visit the Laurel Lake Association website at <https://www.laurellakeassn.com/water-quality-environment>.

**Submitted by Chip Yensan, Lake Host Program Coordinator**



Above: Dennis Guenette



## 2022 Laurel Lake Association Membership Form

**RENEW TODAY!** Either use this form and pay by check, or pay online at <https://www.laurellakeassn.com>

**Membership Dues:** \$15.00 for Adult Memberships and \$5.00 for children under 18

**Laurel Lake Ledger:** Each household of paid-up members will receive the Laurel Lake Ledger via US Mail Delivery or E-mail (please select delivery method below)

### Members

Last Name	First Name	Membership Type		Amount
		(Adult or Child under 18)		A/\$15.00, C/\$5.00
_____	_____	<input type="checkbox"/> Adult	<input type="checkbox"/> Child	_____
_____	_____	<input type="checkbox"/> Adult	<input type="checkbox"/> Child	_____
_____	_____	<input type="checkbox"/> Adult	<input type="checkbox"/> Child	_____
_____	_____	<input type="checkbox"/> Adult	<input type="checkbox"/> Child	_____
_____	_____	<input type="checkbox"/> Adult	<input type="checkbox"/> Child	_____
If you wish, you may also include an additional donation to help support the Association				Donation Amount _____
				<b>Total</b> _____

### Permanent Address

Street: \_\_\_\_\_

City: \_\_\_\_\_ State: \_\_\_\_\_ Zip Code: \_\_\_\_\_

Telephone Number: \_\_\_\_\_ E-mail Address: \_\_\_\_\_

### Summer Address

☐ same as above

Street: \_\_\_\_\_

City: \_\_\_\_\_ State: \_\_\_\_\_ Zip Code: \_\_\_\_\_

Telephone Number: \_\_\_\_\_

### Ledger Delivery Preference (select how you would like to receive your Laurel Lake Ledger)

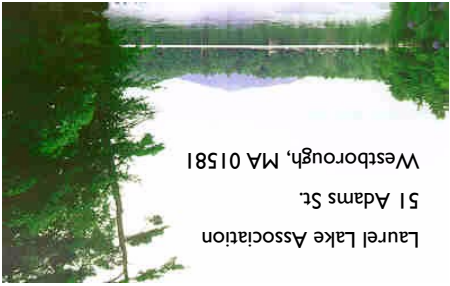
- ☐ I would like to receive an electronic copy of the Ledger via e-mail at the e-mail address below  
E-mail address: \_\_\_\_\_
- ☐ I would like to receive the Ledger via US Mail delivery

\*Please make checks payable to **Laurel Lake Association**

\*All applications and checks should be mailed to: Bill Chase  
Laurel Lake Association  
51 Adams Street  
Westborough, MA 01581

**Thank you for your contribution !**





Laurel Lake Association  
51 Adams St.  
Westborough, MA 01581