



A Little Spot of Heaven

The Laurel Lake Ledger

Laurel Lake Association

31st Annual Newsletter Spring 2018

A WALK THROUGH HISTORY AND FLEUR DE LIS CAMP

Welcome to the Historical Trail of Fleur de Lis Camp (as compiled by Lady Wendy Carney and Henry Whipple, Sr. and edited by Liz Young)



This writing will describe areas on camp property that at one time or another served a different purpose than providing summer fun for campers. At the end of the writing is a map, created by Wendy Korjeff Bellows, that will give you a sense of the area. **Please remember and respect that Fleur de Lis Camp is private property.**

A special thank-you to Mr. Henry Whipple who not only shared his knowledge of this area, but also gave nearly 80 years to keep Fleur de Lis alive and well.

Beginning behind the old red dining hall....The staff cottage, the dining hall and the foundations in front of the dining hall were originally all part of the Laurel Lake Inn or Hotel. The staff cottage was the ice house and pump house for the Inn.

The red dining hall was the horse barn for the Inn. The actual Inn was in front of the dining hall. It burnt to the ground in 1919. (Interestingly the maiden trip for a "new fire truck" was made to the fire, it went off the road on route and became stuck in the mud on the Lake Road.) Lore also says that the fire was started by a hired (from Boston) arsonist. When the arsonist went to leave town, he mistakenly took the train North to Keene and when he traveled back through Fitzwilliam to get to Boston, he was arrested.

A large dance pavilion was located over the water near the Church Grove (Frances E. Beede Chapel). Planks of wood can still be found in and sticking out of the water near the shore. Also, town picnics were often held in the

grove.

The red dining hall we used for many years was in the process of being converted from the horse barn for the Inn into a recreation hall for camp when an electrical fire destroyed the 'old' dining hall during the 1945 camp session. Quickly the recreational hall became a dining hall. And now it is back to being used as recreational space.

The foundation of the old dining hall, which also housed the arts and crafts program, is located next to the farmhouse. It burned during the summer and the Army and Red Cross moved in quickly to feed the camp! Of note, again the fire department had some difficulty....As the firemen laid the hose from the lake to the fire, they neglected to use any protection from the lake and before long the pumper was so full of sand it was not functional.

The farmhouse was built in the 1700s. Originally it was used as the mill headquarters. It was rebuilt three times and additions were added on several occasions. Then it was used as the main farmhouse of a large working farm. (Of note, Henry Whipple's grandfather used to cart the farm's fresh product to Boston via horse and buggy.)



The Guest House, Fleur de Lis Camp, Fitzwilliam, N. H.

The Farmhouse

The Sunken Garden was used as a sheep and pig pen and the original dining hall was the barn for the farmhouse.

The 'Fels' (currently our health center) was originally built in the 1700s. It was first used by the caretakers of the farm. The house and property there were purchased by camp in the 1950s from the Felton family.

Near the volleyball court was a house, a store and a church. This was the center of Howeville, at that time a bustling area of Fitzwilliam. The store and church foundations have been filled in, however handmade nails and pieces of stained glass can still be found in the area.

As you walk down toward the tent field you will find, if you look, several old foundations. Most of them were bucket mills.

Most of Fitzwilliam's industry was located in this area. There was strong consideration for putting the railroad depot where our softball field is now located, however, because of the distance from town, the railroad decided against this.

Foundations of mills can be found on the way to the rifle range, just beyond the Password Grove and down the road toward 'Fairyland'. The reason the beavers were able to quickly create their pond in this area is that they just re-activated the mill pond that was between two of these mills by rebuilding a dam. The foundation on the barn side of the Frog Pond was not a mill but a barn for young stock for the farm.

The land to 'Fairyland' is also private property (road between the senior and mid field entrances). It belongs to Richard Whipple. There are a few old foundations on this road as well.

In the tent field the Junior Lodge was originally a dry house for the buckets. (Actually, Fleur de Lis rebuilt the Junior Lodge in 1962, however, the location has not changed.) The Arts and Crafts building was a pig house, the WOGS (women or girls) were chicken coops and the camp craft shed was a corn crib.

The recreation barn was originally the cow barn for the farm. It was converted into the barn for camp. During the 1955 camp season it was struck by lightning during a severe storm and burned to the ground. The good news was that the fire department had no difficulty with this fire. The barn was rebuilt around the standing chimney and fireplace and named the 'New-Old Barn'. Note: All buildings in camp are now fully protected via lightning rods!

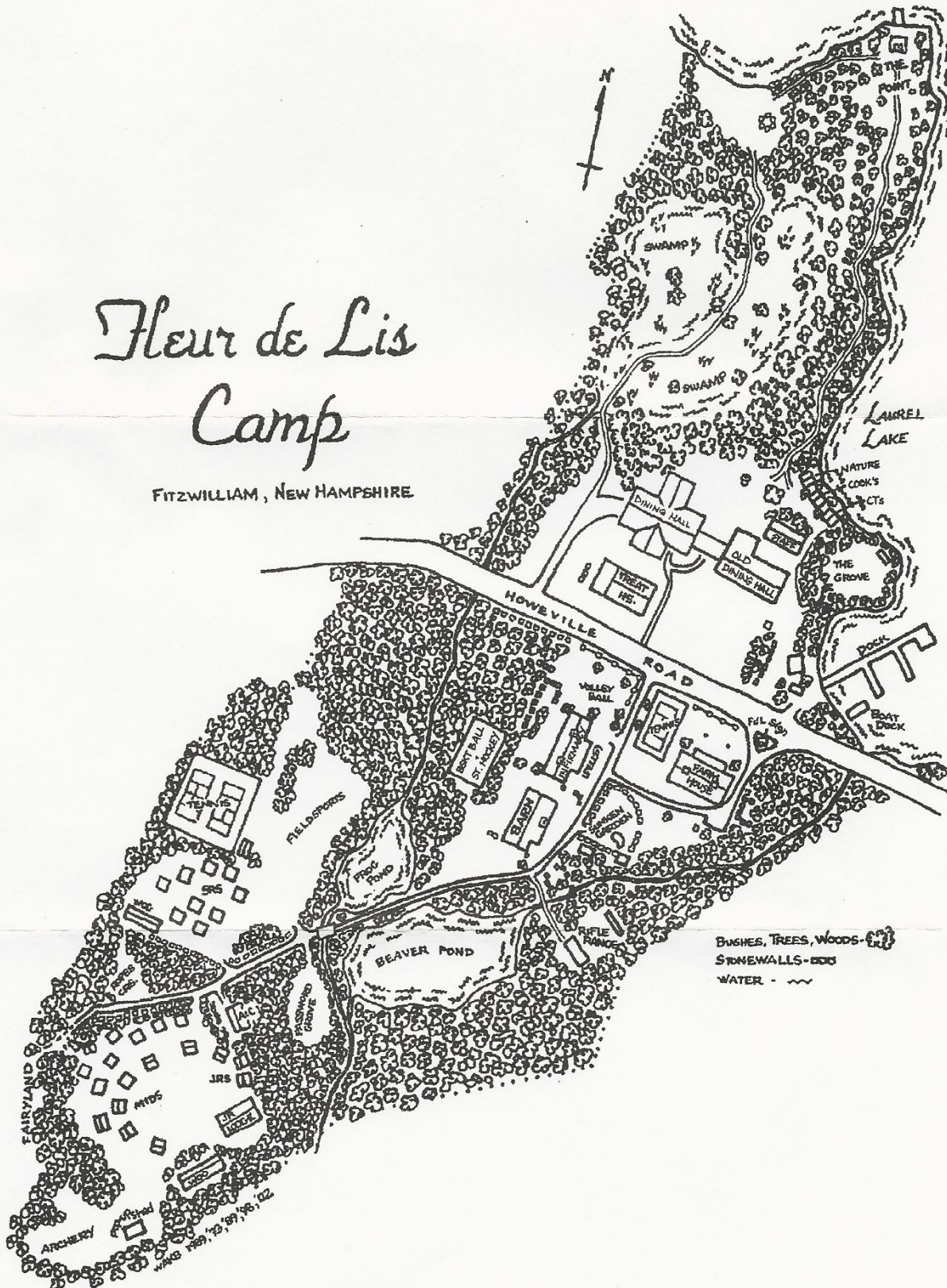
There is much more history to Fleur de Lis including changes since it became Fleur de Lis. We will be glad to answer any questions you may have.



Treat House, also known as the Camp Director's house



FITZWILLIAM, NEW HAMPSHIRE





2018 SUMMER EVENTS—LAUREL LAKE ASSOCIATION

JUNE

2nd - 9:00 AM - The Board of Directors will meet at Camp Fleur de Lis

2nd - 6:00 PM - The 21st Laurel Lake Association Pot Luck Supper will be held at Camp Fleur de Lis dining hall. Enjoy an evening with friends and neighbors by starting off the summer season at Laurel Lake. Bring your own drinks and a dish to share. Coffee, silverware, and paper goods will be provided.

JULY

3rd - **9:00 PM** - Celebrate the Fourth of July with the traditional lighting of flares around Laurel Lake.

Flares are available for purchase at Bottoms Up (Rt. 12), Pottery Works (Rt. 119) and at the Samuels' camp (18 Laurel Lane).

14th - 10:30 AM - The **Annual meeting** will be held at White's Field, Laurel Lake Campground, Keene Ave. Our featured topic is information on the botany (trees, shrubs, flowers) around Laurel Lake. This will be presented by a member of the Fitzwilliam Garden Club. Association business will also be addressed with a picnic lunch following the meeting. Bring a chair (none provided). Note: in case of terrible weather, the meeting will be moved to the restored train depot building in Fitzwilliam Depot, next to the fire station.

14th - 5-7 PM - Concert on the water at Sunrise Rock (west side of lake). Boat on over for some great music.

28th- 11:00 AM - The **28th** Annual Canoe/Kayak Race at Sandy Beach. Registration starts at 9:30 AM. Kids race at 11:05 a.m., 1.5 mile Jr/Sr at 11:00, 5 miler at 12:20, 2.5 mile at 12:30 p.m.

SEPTEMBER

1st - 1:00 PM - The **31st** Dresser-Friedman Regatta. Rain date is September 2 at 1:00 p.m..

8th - 9:00 AM - The Board of Directors will meet at Camp Fleur de Lis.

9th - 10:30 AM - The Laurel Lake Association Pot Luck Brunch will be held at Camp Fleur de Lis to celebrate the finale of the 2018 Summer season. Bring a brunch dish to share. Coffee, plates & silverware will be provided.

LAUREL LAKE LOGO PRODUCTS

Laurel Lake Logo items will be available for purchase at the Annual Meeting on Saturday, July 14. There will also be an order form available for items that are not currently stocked by the Association.

Please bring cash or checks to the meeting. All orders will need to be prepaid as well. If you have questions or special requests, please contact Jessica Pierannunzi at jpierannunzi@yahoo.com.

Thanks!

Jessica



MESSAGE FROM THE PRESIDENT OF THE LAUREL LAKE ASSOCIATION

As I sit here in the wonderful Florida springtime weather I wonder how it could be time for another addition of the Ledger. Everything I hear from back there is “it’s not worth coming back yet”. I guess its been a miserable winter. The ice has left the lake (April 4, per our official Ice Out Record Keeper, Dave Streeter) and spring must be right around the corner along with the black flies.

No matter what the weather or season brings, the association keeps working to protect the lake and its community.

We have again secured a grant from the NH Lakes Association to help us ensure that the Lake Host Program at the boat ramp continues to monitor boats coming and going to prevent any invasive weeds before they enter our lake. As always, we need additional volunteers to keep this essential program running.

Our weed watch team and the water testing team are gearing up and will shortly have schedules for these monitoring activities. Volunteers are never turned down and always welcome.

The Board will be meeting in early June (2nd) to finalize plans for the social activities (annual meeting, canoe race, sail boat race, concert).

We have a strong association and a caring community and together we need to work to further it.

Perry Nadeau, President

Membership Report

(as of 4/13/2018)

Membership Year	2016	2017
Adults	255	239
Children	25	17
Total	280	256
Households	137	128

There are already 42 memberships paid for 2018.

Thank you for your continued support. **Bill Chase**



IN MEMORIAM

Roberta Brackett, 92, passed away in September, 2017. Roberta was born and lived in Athol and worked as a secretary at Athol Memorial Hospital. She and her late husband Bob summered at Laurel Lake for many decades and lived in White's Grove full time after their retirements. Roberta was a daily fixture at Sandy Beach in good weather and went for her daily walks even when she could no longer go too far. She was an avid knitter and many lake folks have her knitted slippers. She also knitted for needy and charitable organizations. She leaves behind 2 daughters, Cheryl Mahoney & Susan Desreuisseau, 3 sons, David, Richard and Charley Brackett, 5 grandchildren and 3 great-grandchildren.

David Green, 77, of Fitzwilliam passed away in September, 2017. David was born in England and spent several years living on a Kibbutz in Israel. He had a Ph.D. in biochemistry and worked in several companies in the biochemistry field. He was an expert in DNA fingerprinting and founded his own company BioMolecular Assays, Inc. David was very active in preserving rural space in Fitzwilliam including helping protect the land that established Tracie's Community Farm. He was also active in the Monadnock Conservancy and Fitzwilliam's small business development and support group, along with leadership in Congregation Ahavas Achim. David leaves behind his wife Barbara, a long time Laurel Lake Association board member, his son Amit Green, daughter Kerry Shrives and 2 grandchildren.

Debby Nance, 73, of Beverly, Mass. passed away in March, 2018. Debby was born in Worcester, Mass. and spent summers at the family camp "Kenloch" on Laurel Lake (see the article in 2017 issue of the Ledger). Changing careers from elementary school teacher and real estate agent, Debby went to graduate school at Radcliffe in her mid-fifties and became a landscape designer. She was a dedicated and knowledgeable weed watcher for the Laurel Lake Association, leading the weed watch committee for many years. She leaves behind her husband Raymond, daughters Rachel Malde and Lindsay Calef and 2 grandsons.

Phil Walling, 85, of Fitzwilliam passed away in April, 2018. Phil was born in New Jersey and was a career Air Force officer, serving from 1953 to 1980. A veteran of both the Korean and Vietnam Wars he received medals for humanitarian rescues of Vietnamese orphans and refugees. After moving to Fitzwilliam, Phil worked in real estate for 26 years. He was a strong Fitzwilliam supporter, serving as a village district commissioner, trustee of trust funds, co-author of the town history, among other activities. Phil was a long time member of the Board of Directors of the Laurel Lake Association. He is survived by his wife Reuel, children Phyllis Key, Lisa Almendares and Bain Walling, 7 grandchildren and 2 great-grandchildren.



HIGHLIGHTS OF 2017 LAKE TESTING RESULTS

This Ledger includes the full water test report from the Volunteer Lake Assessment Program (see pages 8 & 9). Laurel Lake is classified as oligotrophic, which is the highest of the three trophic categories, based on dissolved oxygen (DO), chlorophyll-a, transparency, and plant growth. Our test results are compared with results of NH waterbodies in the same category.

The Laurel Lake “report card” is the table, with the highlighted colors on the first page of the report. Our 2017 results for these parameters were similar to 2016 results. Average total phosphorous levels in the upper water layer were good, and stable with 2016. The level was much less than the state median for oligotrophic lakes. Algal growth, as measured by chlorophyll-a level, was good, and has been significantly improving since monitoring began. It, too, is less than the state median for oligotrophic lakes.

Dissolved oxygen in lake water is used by all forms of aquatic life, so it is used to assess the “health” of the lake ecosystem. “Limited data” is noted in the report, because Laurel Lake data is collected once every other year, when a biologist visits. We do not have equipment to measure DO.

Laurel Lake water clarity (transparency) results are definitely a cause for concern. Average transparency decreased from 2016 and was the worst measured since 2009, though it is still better than the state median. Historical trend analysis shows that transparency has been significantly decreasing since monitoring began. See graph on bottom right of page 2 of the V LAP report. Stormwater runoff from shoreland properties, watersheds, roads, and driveways flush nutrients and silt into the lake. In order to stop the decline in transparency, it is very important to reduce stormwater runoff by stabilizing the shoreline. Find out how to soak up the rain at: www.soaknh.org.

For help reading the full V LAP report go to: <https://www.des.nh.gov/organization/divisions/water/wmb/vlap/annual-reports/2016/documents/how-to-read-your-report.pdf>

Thank you to the 2017 sampling team: Tricia and Tom Coleman, Phyllis Lurvey, Perry Nadeau, Barbara Schecter, and Rachel Shrives.

Barbara Green, Chair, Water Testing Committee





Volunteer Lake Assessment Program Individual Lake Reports

LAUREL LAKE, FITZWILLIAM, NH

MORPHOMETRIC DATA

Watershed Area (Ac.):	768	Max. Depth (m):	13.4	Flushing Rate (yr ¹):	0.4	Year	Trophic class	KNOWN EXOTIC SPECIES
Surface Area (Ac.):	155	Mean Depth (m):	6.1	P Retention Coef:	0.78	1992	MESOTROPHIC	
Shore Length (m):	3,500	Volume (m ³):	3,826,000	Elevation (ft):	1099	2006	OLIGOTROPHIC	

The Waterbody Report Card tables are generated from the DRAFT 2016 305(b) report on the status of N.H. waters, and are based on data collected from 2006-2015. Detailed waterbody assessment and report card information can be found at www.des.nh.gov/organization/divisions/water/wmb/swqa/index.htm

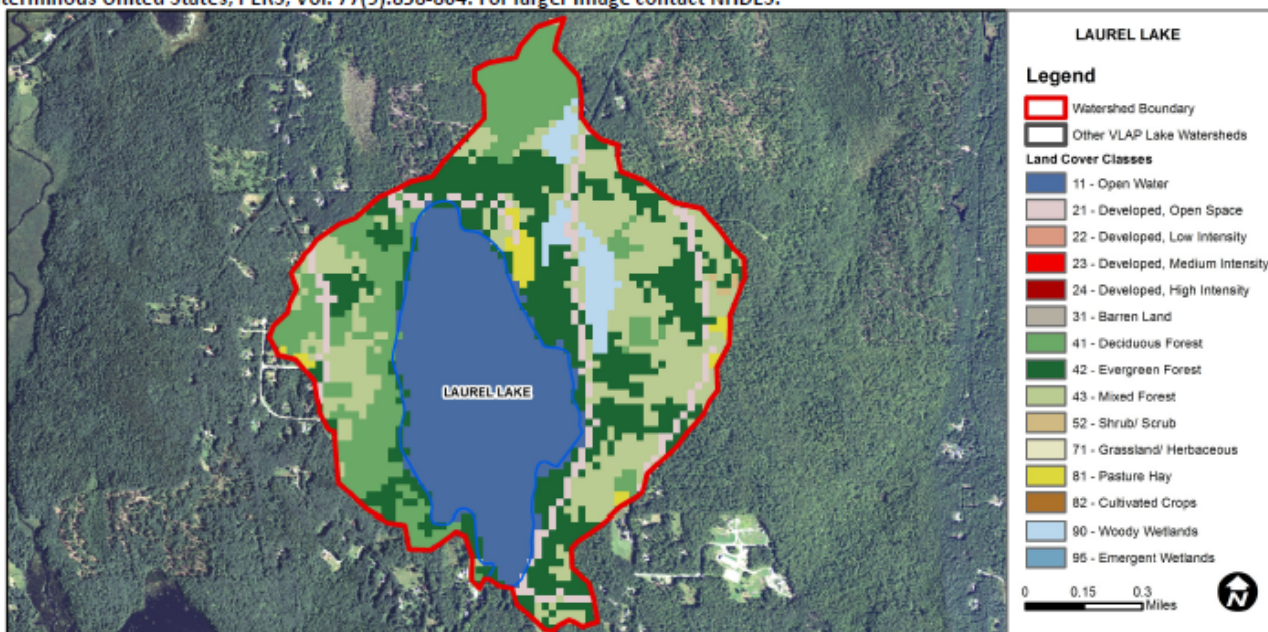
Designated Use	Parameter	Category	Comments
Aquatic Life	Phosphorus (Total)	Good	Sampling data is better than the water quality standards or thresholds for this parameter.
	pH	Bad	Data periodically exceed water quality standards or thresholds for this parameter by a large margin.
	Oxygen, Dissolved	Encouraging	Limited data for this parameter predicts water quality standards or thresholds are being met; however more data are necessary to fully assess the parameter.
	Dissolved oxygen saturation	Encouraging	Limited data for this parameter predicts water quality standards or thresholds are being met; however more data are necessary to fully assess the parameter.
	Chlorophyll-a	Good	Sampling data is better than the water quality standards or thresholds for this parameter.
Primary Contact Recreation	Escherichia coli	Good	Sampling data commonly meet water quality standards or thresholds for this parameter.
	Chlorophyll-a	Very Good	All sampling data meet water quality standards or thresholds for this parameter.

BEACH PRIMARY CONTACT ASSESSMENT STATUS

LAUREL LAKE - TOWN BEACH	Escherichia coli	Good	Sampling data commonly meet water quality standards or thresholds for this parameter.
LAUREL LAKE - CAMP FLEUR DE LIS BEACH	Escherichia coli	Very Good	All sampling data meet water quality standards or thresholds for this parameter.

WATERSHED LAND USE SUMMARY

Fry, J., Xian, G., Jin, S., Dewitz, J., Homer, C., Yang, L., Barnes, C., Herold, N., and Wickham, J., 2011. Completion of the 2006 National Land Cover Database for the Conterminous United States, PERS, Vol. 77(9):858-864. For larger image contact NHDES.



Land Cover Category	% Cover	Land Cover Category	% Cover	Land Cover Category	% Cover
Open Water	28.0	Barren Land	0	Grassland/Herbaceous	0
Developed-Open Space	5.42	Deciduous Forest	17	Pasture Hay	1.46
Developed-Low Intensity	0	Evergreen Forest	23.68	Cultivated Crops	0
Developed-Medium Intensity	0	Mixed Forest	20.99	Woody Wetlands	3.44
Developed-High Intensity	0	Shrub-Scrub	0.17	Emergent Wetlands	0



RECOMMENDED ACTIONS: A significant storm event in June and resulting stormwater runoff and tributary flushing resulted in slightly higher bacteria levels, and may have contributed to the higher epilimnetic phosphorus levels and lower lake clarity (transparency). The above average spring rainfall may also have contributed excess nutrients and flushed wetland systems rich in dissolved organic matter which can affect water clarity. Apparent color was measured and fluctuated within a range indicative of waters having a light tea (brown) color. Continue to measure water color and evaluate how it may related to the worsening lake clarity. The above average spring and early summer rainfall highlights the importance of managing stormwater runoff from shorefront and watershed properties, roads and driveways, and stabilizing lake shorelines. Continue to educate lake and watershed residents on ways to reduce stormwater runoff and consider partnering with Soak up the Rain NH (www.soaknh.org) to install stormwater controls in the watershed. Keep up the great work!

OBSERVATIONS (Refer to Table 1 and Historical Deep Spot Data Graphics)

- ◆ **CHLOROPHYLL-A:** Chlorophyll levels were within a low range and decreased as the summer progressed. Average chlorophyll levels increased slightly from 2017 but remained less than the state median and the threshold for oligotrophic lakes. Historical trend analysis indicates significantly decreasing (improving) chlorophyll levels since monitoring began. We hope to see this continue!
- ◆ **CONDUCTIVITY/CHLORIDE:** Deep spot (Epilimnion, Metalimnion and Hypolimnion) and Keene Ave Trib. conductivity and/or chloride levels were within an average range for NH lakes and only slightly greater than the state medians. Average epilimnetic (upper water layer) conductivity decreased slightly from 2016 and historical trend analysis indicates stable epilimnetic conductivity levels since monitoring began.
- ◆ **COLOR:** Apparent color was measured in the epilimnion and indicates the water is lightly tea colored, or light brown.
- ◆ **E. COLI:** E. coli levels at North Beach and Swim Club beach were higher in June following a significant storm event, however were not above the state standard of 88 cts/100 mL. The higher E. coli levels do indicate stormwater runoff can impact bacteria levels. E. coli decreased to lower levels in July and August. Hodgkins E. coli levels were low in July. Keene Ave and Keene Ave Before Lake E. coli levels were elevated in June following the storm event however did not exceed the state standard for surface waters.
- ◆ **TOTAL PHOSPHORUS:** Epilimnetic phosphorus was slightly higher in June following the significant storm event, and then decreased to lower levels in July and August. Average epilimnetic phosphorus remained stable with 2016 and was much less than the state median and threshold for oligotrophic lakes. Historical trend analysis indicates relatively stable epilimnetic phosphorus levels with moderate variability between years. Metalimnetic (middle water layer) phosphorus levels fluctuated within a low range. Hypolimnetic (lower water layer) phosphorus levels fluctuated within a moderate range. Keene Ave and Keene Ave Before Lake phosphorus levels were elevated however within average ranges for these stations.
- ◆ **TRANSPARENCY:** Transparency measured with (VS) and without (NVS) the viewscope was much lower (worse) in June following the significant storm event and above average spring rainfall. VS and NVS transparency increased (improved) steadily through August. Average NVS transparency decreased from 2016 and was the worst measured since 2009, however remained higher (better) than the state median. Historical trend analysis indicates significantly decreasing (worsening) NVS transparency since monitoring began. VS transparency was generally much higher (better) than NVS transparency and likely a better measure of actual conditions.
- ◆ **TURBIDITY:** Epilimnetic turbidity remained relatively stable and within a low range from June through August. Metalimnetic turbidity decreased from June through August and remained within a low range, and Hypolimnetic turbidity increased from a low range in June to a moderate range in August. Keene Ave and Keene Ave Before Lake turbidity levels were within low ranges for these stations.
- ◆ **pH:** Epilimnetic and Metalimnetic pH levels were within the desirable range 6.5-8.0 units, however epilimnetic pH has historically fluctuated below the desirable range. Average epilimnetic pH level increased (improved) in 2017 and was the best measured since monitoring began. Historical trend analysis indicates stable epilimnetic pH levels since monitoring began. Hypolimnetic, Keene Ave and Keene Ave Before Lake pH levels were slightly acidic and less than the desirable range.

Station Name	Table 1. 2017 Average Water Quality Data for LAUREL LAKE-FITZWILLIAM										
	Alk.	Chlor-a	Chlo- ride	Color	Cond.	E. Coli	Total P	Trans.		Turb.	pH
	mg/l	ug/l	mg/l	PCU	uS/cm	MPN/100ML	ug/l	m		ntu	
								NVS	VS		
Epilimnion	4.3	2.86	9	30	52.1		4	4.74	5.93	0.49	6.90
Metalimnion					50.6		6			0.56	6.63
Hypolimnion					54.9		13			1.57	6.05
Hodgkins						17					
Keene Ave Trib.					50.0	228	42			1.22	5.32
Keene Ave Trib. Before Lake					54.3	326	43			1.04	5.40
North Beach						34					
Swim Club						9					

NH Water Quality Standards: Numeric criteria for specific parameters. Results exceeding criteria are considered a water quality violation.

Chloride: > 230 mg/L (chronic)

E. coli: > 88 cts/100 mL – public beach

E. coli: > 406 cts/100 mL – surface waters

Turbidity: > 10 NTU above natural level

pH: between 6.5-8.0 (unless naturally occurring)

NH Median Values: Median values for specific parameters generated from historic lake monitoring data.

Alkalinity: 4.9 mg/L

Chlorophyll-a: 4.58 mg/m³

Conductivity: 40.0 uS/cm

Chloride: 4 mg/L

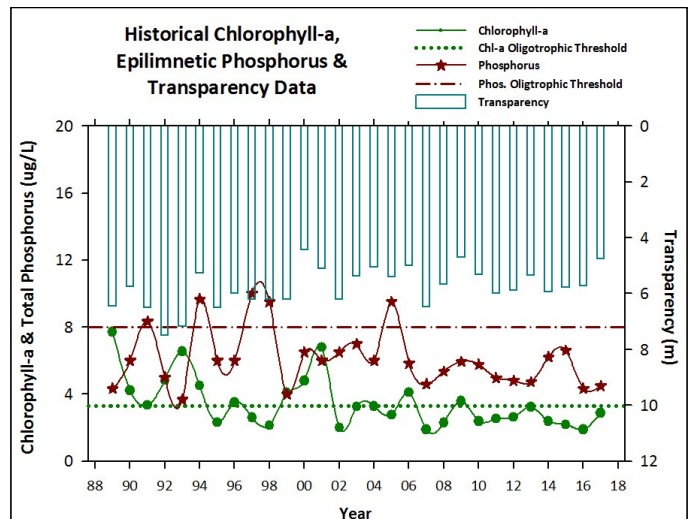
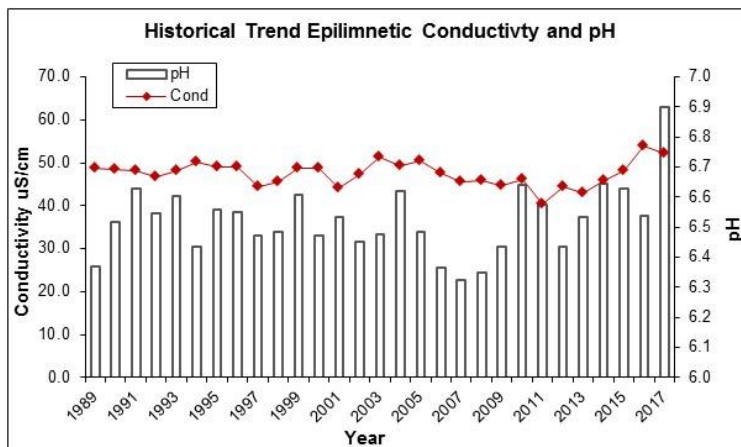
Total Phosphorus: 12 ug/L

Transparency: 3.2 m

pH: 6.6

HISTORICAL WATER QUALITY TREND ANALYSIS

Parameter	Trend	Explanation	Parameter	Trend	Explanation
Conductivity	Stable	Trend not significant; data show low variability.	Chlorophyll-a	Improving	Data significantly decreasing.
pH (epilimnion)	Stable	Trend not significant; data show low variability.	Transparency	Worsening	Data significantly decreasing.
			Phosphorus (epilimnion)	Stable	Trend not significant; data moderately variable.





LAKE HOST PROGRAM

Since 2013, the Laurel Lake Association has received a grant from the New Hampshire Lake Association to pay for lake hosts. Our Association received a little over \$1150 last year which was enough to cover six hours Saturday, Sunday and holidays. This year we also have received \$1150. Our association is required to provide a 100% match primarily made up of volunteer host hours.

Last year our Lake Hosts had contact with over 300 boaters providing courtesy boat inspections and education on how to prevent the spread of aquatic invasive species. During these inspections no invasive species were found.

We continue to need volunteers to provide more coverage at the boat ramp so please consider donating a few hours of your time during the summer to being a Lake Host. Training is provided and it can be a pleasant way to spend time, meeting new people and enjoying the water.

Submitted by Barbara Brooks, Chair, Lake Host Program

Editor's Note: Barbara Brooks has devoted many hours to chairing our Lake Host program but can no longer continue in that role. The Association needs a volunteer to take over coordination of this very important function which includes record keeping and reporting to NH Lakes. Please contact Barbara or any Board member if you are interested in volunteering for this role. Without a coordinator we will no longer be able to keep the Lake Host program going.

BY-LAWS CHANGES TO BE VOTED ON AT ANNUAL MEETING

The membership will be asked to vote on the proposed changes to the Laurel Lake Association by-laws at the annual meeting scheduled for July 14, 2018. The changes were presented to the membership during the 2017 meeting. There were two proposed changes. Article III – Officers was reorganized to better clarify the process of succession in the event the elected President was unable to complete her/his term. The proposed changes can be found under Article III, Section 1 Part E. Under such conditions, the vice president would assume the presidency and would appoint a new vice president. The membership would vote on this appointment at the next annual meeting.

The second proposed change occurs under Article VI. The title of the article would change from “Distinguished Service Award” to “Awards”. Under this heading there would now be two awards, The Distinguished Service Award and a Lifetime Achievement Award. The defining criteria for each award will be listed.

The full current by-laws (revised 2014) and the proposed new by-laws (draft, 2018) can be found on the Laurel Lake Association web site @ laurellakeassn.com. Click on Documents, then click on LLA By-Laws.

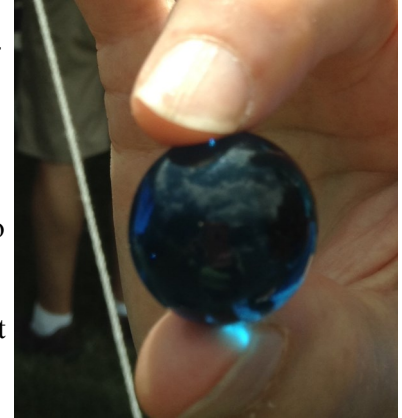
Submitted by Barbara Dumont, Nominating Committee Chairperson



THE BLUE MARBLE PROJECT

In 1972 the American astronaut, James Irwin, said, “As we got farther and farther away from earth, it diminished in size. Finally it shrank to the size of a marble, the most beautiful blue marble you can imagine.”

The Apollo crew also took a picture of the earth from a million miles away, and it has become the iconic “Blue Marble Shot”. Scientist and water advocate, Dr. Wallace Nichols thought about this comparison for many years, and in 2009 he began the Blue Marble Project. His idea was to pass out as many blue marbles as possible, helping people to see them as representations of the earth, the water planet. He gave them to people he was thankful for, that loved and cared for the earth as much as he did. Once you got a marble, you were supposed to pass it on to another like-minded person. Well, the project went viral, and within 18 months nearly a million people had received or given marbles to express gratitude for work that benefits our planet. Each of these marbles reminds us



that we are connected to each other, and everything we do on this planet matters.

We first learned of the Blue Marble Project when Greg and I went to the 2017 Lake Host Congress, and we brought our granddaughter, Lucy Pierannunzi, because she was interested in the water topic and she was doing a project for school. Dr. Nichols gave the keynote address about humans’ love and need for water, and he gave a blue marble to everyone there, including Lucy. She took her mission of passing on the blue marble very seriously, and at the 2017 Annual Meeting she gave her marble to Barbara Green because she saw that Barbara loved clean water too.

I wonder who Barbara will pass the marble to.

Jeannette Gardner

PS. Lucy will have her project set up at the annual meeting in July. Stop by and visit her if you can.



Lucy Pierannunzi & Barbara Green

Annual Meeting Picnic Committee Needs Help

The July 14, 2018 Annual Meeting Picnic Committee is looking some help for the picnic. There are three categories of help needed. If you can help in any of the categories below, please contact Jack Dumont at dumont@charter.net or by texting or calling Jack @ 413-537-9620.

We are looking for two grills to be lent for the cooking of burgers and hot dogs. Also looking for people to pick up the grills and deliver them to the field on the day of the event and to return them to their owners after the event.

Volunteers are needed to help set up the tables about an hour before the beginning of the meeting and assisting in positioning the two tables needed to serve the lunch. Also looking for volunteers willing to clean up and someone willing to take the trash to the dump after the event.

Appreciation goes out to all those who have helped in the past. Thank you for your continued support.



2017 WEED SURVEY REPORT

Again for 2017 the “weed watch” committee is glad to report that no exotic or invasive weed types were found in Laurel Lake. Our group of weed watchers surveyed the lake three times, about the last week in June, July and August. Our group observed the normal native plant types (pipewort, lobelia, quillwort, bur-reed, pickerel weed, wild celery, floating heart and white and yellow water lilies) including various pondweeds that the NH DES helped identify. Some gelatinous green algae was seen at various locations throughout the summer. In early September, a few bryozoans (harmless) were spotted growing on submerged branches.

We would like to recognize and thank our group of weed watchers: Linda Anderson, Charley Brackett, Gail Connelly, Ken DeBlieu, Barbara Dumont, Catherine, Brad, Monica and Ned Greeley, Barbara Green, Tricia LeClaire, Phyllis Lurvey and Roberta Nadeau. Please contact Beth or Bill if you are interested in participating in this weed survey.

As stated in our report for last year, we encourage lake residents not to transplant any plant types from another lake or garden shop into Laurel Lake or near the waters’ edge. Lake residents are also encouraged to report any new or different “weed” or plant growth they find.

Submitted by Weed Watch Co-Chairs: **Beth Samuels** (evsamuels1 @yahoo.com) and **Bill Townsend** (wtownsend68@comcast.net).



2017 Annual
Meeting Pictures.
Courtesy of
Phyllis Lurvey,
Cub reporter





TREASURER'S REPORT YEAR ENDING 2017

<u>Expenditures</u>		<u>Income</u>
Logo items	\$2046.40	\$2420.00
Membership	37.75	2435.00
Flares	337.00	545.00
Canoe race	1582.78	1752.00
Org. dues	430.00	
Water testing	928.75	
Ledger	772.50	
Annual mtg.	238.25	
Regatta	172.63	
Conference fees	317.58	
Postal fees	83.80	
Meeting supplies	127.62	
Concert on Lake	260.00	
Donations		370.00
Interest on checking acct.		1.27
<hr/>		<hr/>
Totals	\$7335.06 out	\$7523.27 in
Difference of \$188.21 profit		

Beginning balance of checking account \$6746.97

+ 188.21 profit

\$6935.18 current amount in checking account

CDS \$23,459.28
Total Assets \$30,394.46

Respectfully Submitted,

Jeannette Gardner, Treasurer

**2017 - 2018 OFFICERS**

Perry Nadeau - President

Kathy Olson - Vice President

Liz Young - Secretary

Jeannette Gardner - Treasurer

BOARD OF DIRECTORS

Barbara Green	2018	Jon LeClaire	2019
Bill Samuels	2018	Terry Silverman	2019
Bill Townsend	2018	Charley Brackett	2020
Tom White	2018	Barbara Brooks	2020
Jack Dumont	2019	Bill Chase	2020
Craig Heatley	2019	Jessica Pierannunzi	2020

COMMITTEE CHAIRPERSONS

Kathy Olson	Editor Laurel Lake Ledger
Barbara Green	Water Testing Committee
Beth Samuels/Bill Townsend	Weed Survey Committee
Barbara Dumont	Nominating
Jack & Barbara Dumont	Annual Meeting/Family Picnic
Charley Brackett	Canoe/Kayak Race
Bruce Hill	Commodore Dresser-Friedman Sunfish Regatta
Jessica Pierannunzi	LLA Logo Products - T & Sweatshirts & Hats
Bill Chase	Membership
TBD	Lake Host Program
Terry Silverman	4th of July Celebration Flares
John Fitzwilliam	Swim Club Representative
Perry Nadeau	Concert on the Lake/Boat Parade

Visit our Web Site at: www.LaurelLakeAssn.com



2017 ANNUAL MEETING

Our 2017 Annual Meeting attracted a good sized crowd and good weather until just as the picnic was ending up. In addition to Association business we had Andrea LaMoreaux, Vice President of New Hampshire Lakes Association, speak to us about updates to the Shoreline Protection Act and other relevant information. Andrea noted that the biggest threats to lakes today is due to runoff from development and severe weather events. Development near water bodies may clear out trees and shrubs which slow and filter water and transform water absorbing soil to non-permeable pavement or hardpack which allows water to run to its lowest point—the lake. Severe weather causes heavy rains, leading to runoff which increases turbidity (cloudiness) and phosphorus levels in the lake.



The Shoreline Protection Act was originally enacted in 1994. The Act covers the land from the lake shore to 250' back with different regulations within 50', 50' - 150' and 250'. From the water's edge to 25' in, no fertilizers should be used. From 25' to 50', slow release fertilizer can be used but lake water is the best fertilizer as it already has nutrients in it. In that area you should also maintain vegetation. You can cut down dead and dying trees but recommended you take a photo of a diseased or dead tree before you take it down to have evidence if questioned about its removal; remember that tree stumps can be ground down but the root system must stay in place. You cannot add sand to make or enhance a beach. You can make a perched beach with a permit. In the 50'-100' area you need to maintain 25% of the

existing vegetation. In the zone from water's edge to 250' away, no more than 30% of the land can be impervious, so as to avoid runoff into the lake.

Permits are required for new construction, excavation and filling activities. Permits are not required for flowers, gardens, trimming, pruning, thinning vegetation, mowing lawns and raking leaves and making modifications to existing driveways. The use of excavators rather than doing a job with hand tools will trigger the need for a permit. A question was asked about enforcement of the Shoreline Protection Act. If someone has taken a permit for some work, they should post it. If someone suspects a violation they should contact NH DES. However, there are limited resources to review and enforce actions and the focus would be on large projects that may have major impact.

A question about fireworks damaging the lake was asked. Fireworks have many chemicals in them and it is preferable to not shoot them off over the water. Andrea suggested that the town create an ordinance permitting fireworks on only ONE night rather than throughout the whole season. She noted that many issues can be dealt with more effectively at a local level.



Photos
Courtesy
Of
Phyllis
Lurvey





2017 CANOE/KAYAK RACE RESULTS

[Category, Winner, Winner's Time]:

3/4 Mile Children's Race:

Girl's Canoe: Fiona Nash & Elizabeth McGee (9:26)

Boy's Kayak: Billy Harrison (9:58)

Girl's Kayak: Amelia Evans (9:15)

Girl's SUP: Colby Gund (12:30)

1.5 Mile:

Jr/Sr Canoe: Eric Jones & Phoebe Jones (14:33)

SUP (ages 17 and up): Tom Walton (17:13)

2.5 Mile:

Men's Canoe: Eric Jones & Fred Thompson (23:46)

Women's Canoe: Lindsey Malchow & Alexandra Bowen (29:51)

Mixed Canoe: Amy Thornton & Pat Lizak (23:52)

Jr/Sr Canoe: Cameron Whaland & Jerry Whaland (29:42)

Men's Kayak: Adam Beyer (23:25)

Women's Kayak: Tammi Lannon (39:36)

Tandem Kayak: Chad Hill & Ethan Hill (29:21)

5 Mile:

Tandem Racing Canoe: Valerie Hamlett & Ed Euvard (48:02)

Solo Racing Canoe: Bill Terbush (44:08)

Tandem Recreational Canoe: Jerry Madore & Dave Arcaro (45:02)

Men's Kayak: Dave Wiltey (41:19)

Women's Kayak: Jenifer Kraemer (42:54)

Tandem Kayak: Priscilla Reinertsen & Pam Browning (43:45)

SUP: Tim Hudyneia (53:47)

Tug 'O' War Winners: Zac Gardner & Conor Olejarz

Runners Up: Dave Arcaro & Nick Murphy



2017 REGATTA



Saturday, September 2, 2017 was a beautiful day for the 30th anniversary of the annual Dresser-Friedman Regatta, named in honor of former sailors and residents Gardner Dresser and Larry Friedman. Eight sunfish lined up at a buoy in front of the Samuel's dock at 1 o'clock for the start of the race. Our new Commodore, Bruce Hill, started the race with a blast and the boats raced off to the western side of the lake with Tom White in the lead. A good wind unfurled a rainbow of sails: green and white, red, white and blue, multicolored, and the crowd's favorite, a black sail marked with a Jolly Roger in white.

Tom White is to be credited for rustling up a group of newer participants from the southern end

of the lake by offering lessons and encouragement to anyone willing to learn. This year the skill of the sailors was as diverse as their ages. Vinnie Pierannunzi accompanied his mother Jessica, who had received her first and only sailing lesson just the day before the race. Tom White and Bill Samuels are "mature" and experienced sailors, while Matt Poulin and Patrick McNamara grew up sailing on Laurel Lake. There were newer participants: Chris Briggs, Mike King, Kyle Freeman, as well as the afore mentioned Jessica and Vinnie. The ringer in the race was Berkley Sheepdog McNamara, who served as mascot and panted into his master's sails.

When the sailboats reached the buoy at Sandy Beach, the wind stopped and all the boats stalled for about ten minutes. Patrick and Bill were the first to break free and continued neck in neck along the west side of the lake. Matt Poulin and Tom White began to catch up just as Patrick broke ahead and reached the finish line first. Matt Poulin gradually overtook Bill Samuels and beat him by only a minute. Tom White followed two minutes later, as the fourth place finisher. They were followed in order by Chris Briggs, Mike King, Kyle Freeman, and Jessica and Vinnie Pierannunzi.

Last year's winner, Patrick McNamara, hosted the after party at the Dresser cabin on Laurel Lane. The White contingent, the Commodore and his spouse all sported bright green 30th anniversary regatta tee shirts. Bruce Hill presented handsome plaques to the first, second and third place finishers as well as special tee shirts that the Whites made for the event. Everyone feasted on a potluck spread of pulled pork, egg salad, chips, cookies and other delectables. Berkley and Patrick posed in front of the official centerboard trophy, reminding us all that a McNamara win next season would be the first three-peat in the 30 year history of the race. No one wants to let him get away with that challenge!

Please help out! All are invited to round up a Sunfish, practice or learn some sailing skills, and join the fun at the 31st Regatta set for Labor Day Weekend, 2018.

Submitted by Beth Samuels



**Elliot Institute Concerts on the Fitzwilliam Common Summer 2018**

July 12th: “Tattoo” (with Walden Whitham): an acoustic five-piece band performing American roots Rock ‘N Roll...a repeat favorite.

July 19th: “Walt Sayre Band”: A six piece band performing a variety of ballads, jazz and show tunes; an annual crowd pleaser.

July 26th: “Tropical Sensations”: A multi-steel drum band performing your favorites.

Aug 2nd: “Tom Foolery Band”: A 7 piece band playing rock, big band, and jazz music. A Cheshire County Favorite.

Aug 9th: “George The Magician”: A high energy , family friendly comedy and magic show. (Co-sponsored with Fitzwilliam Friends of the Library).

Aug 16th: “Studio 2 - The Beatles”: A Beatles tribute band; a four piece band that will perform all of your Fab 4 song hits.

All performances will be from 7:00-8:30 pm on the Common. Bring a chair or a blanket. In case of inclement weather, the venue will be upstairs in the Town Hall.

Support Our Local Businesses!

Activities of the Laurel Lake Association have been supported over the years by donations of goods and services from many of our local merchants and families. The annual canoe/kayak race has a popular raffle with many of the prizes donated from local businesses. A special ‘Thank You’ to Camp Fleur de Lis who generously provide their dining room to us for the Pot Luck events and board meetings and to Laurel Lake Campground for use of their field and tent for the annual meeting. Say ‘thanks’ to these merchants and organizations for their support by giving them your business:

Bottoms Up

Bullock’s Farm Stand

Ed’s Crossroad Pizza

Flip Side Grill

Pottery Works

Canoe Race Help

The annual canoe/kayak race takes a lot resources to pull off and Charley Brackett is always looking for help with it. Specifically, help with parking for the paddlers by Sandy Beach and boaters who can act as race officials to monitor the course and help paddlers with any mishaps. Please contact Charley at 603-303-1396 before the race on July 28.



2018 Laurel Lake Association Membership Form

Membership Dues: \$10.00 for Adult Memberships and \$5.00 for children under 18

Laurel Lake Ledger: Each Household of paid-up members will receive a copy of the Laurel Lake Ledger via US Mail Delivery or E-mail (please select delivery method below)

Members

Last Name	First Name	Membership Type (Adult or Child under 18)		Amount A/\$10.00, C/\$5.00
_____	_____	<input type="checkbox"/> Adult	<input type="checkbox"/> Child	_____
_____	_____	<input type="checkbox"/> Adult	<input type="checkbox"/> Child	_____
_____	_____	<input type="checkbox"/> Adult	<input type="checkbox"/> Child	_____
_____	_____	<input type="checkbox"/> Adult	<input type="checkbox"/> Child	_____
_____	_____	<input type="checkbox"/> Adult	<input type="checkbox"/> Child	_____

If you wish, you may also include an additional donation to help support the Association Donation Amount _____

Total _____

Permanent Address

Street: _____

City: _____ State: _____ Zip Code: _____

Telephone Number: _____ E-mail Address: _____

Summer Address

☐ same as above

Street: _____

City: _____ State: _____ Zip Code: _____

Telephone Number: _____

Ledger Delivery Preference (select how you would like to receive your Laurel Lake Ledger)

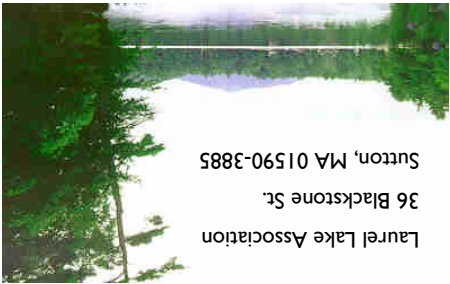
- ☐ I would like to receive an electronic copy of the Ledger via e-mail at the e-mail address below
E-mail address: _____
- ☐ I would like to receive the Ledger via US Mail delivery

*Please make checks payable to **Laurel Lake Association**

*All applications and checks should be mailed to: Bill Chase
Laurel Lake Association
36 Blackstone Street
Sutton, MA 01590-3885

Thank you for your contribution

Visit us on the world wide web at <http://www.LaurelLakeAssn.com>



Laurel Lake Association
36 Blackstone St.
Sutton, MA 01590-3885